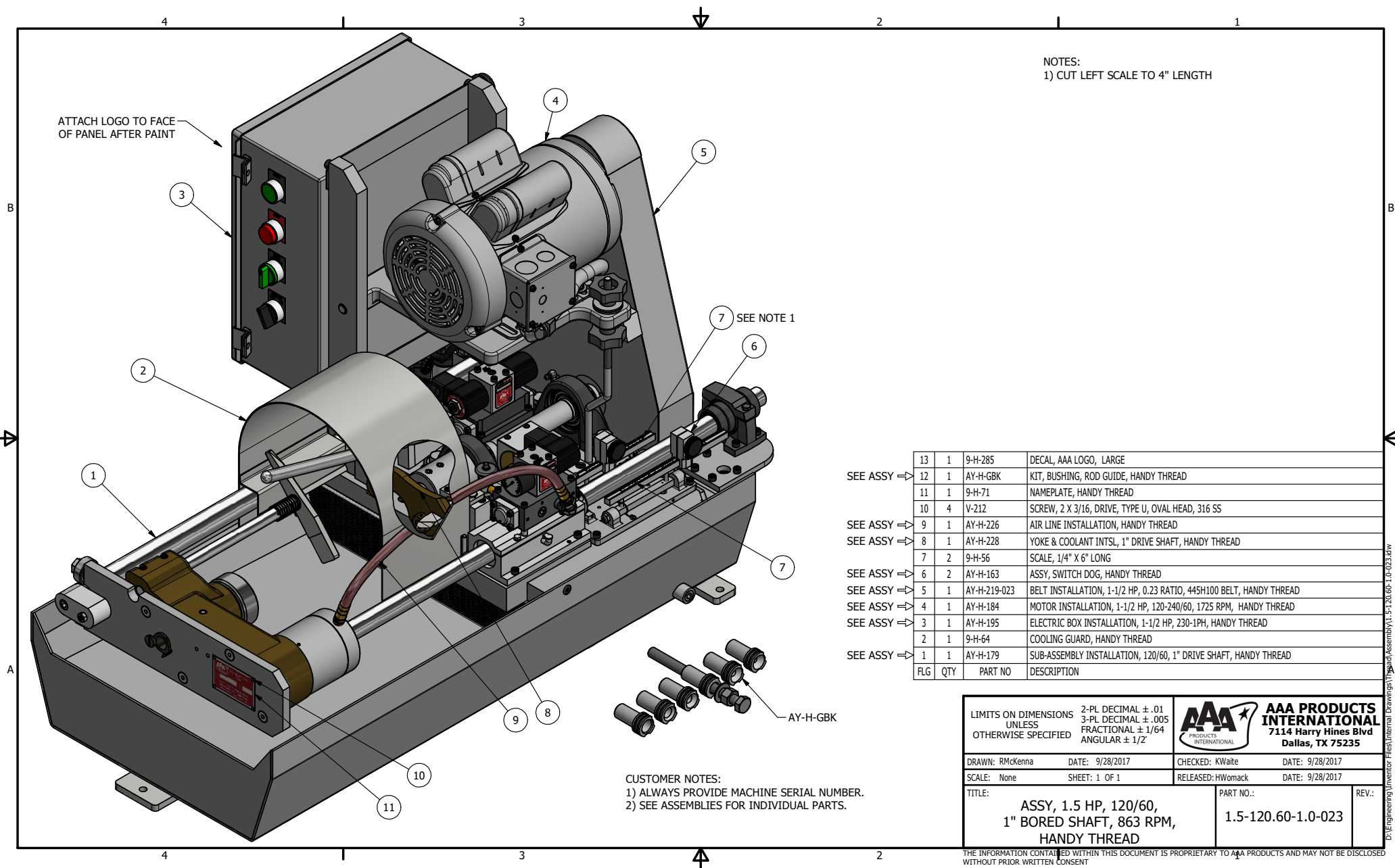


Handy Thread Parts

Associated Drawings

Specific parts may be customized and unique for each Handy-Thread manufactured. Machine serial numbers must be provided so ordered parts can be cross-referenced. Failure to provide a machine serial number may cause the incorrect ordering of parts and assemblies.

These drawings are for a generic machine using a pulley ratio of 0.23 which is approximately 400 rpm. Pulleys are changed to provide different machine rpms.



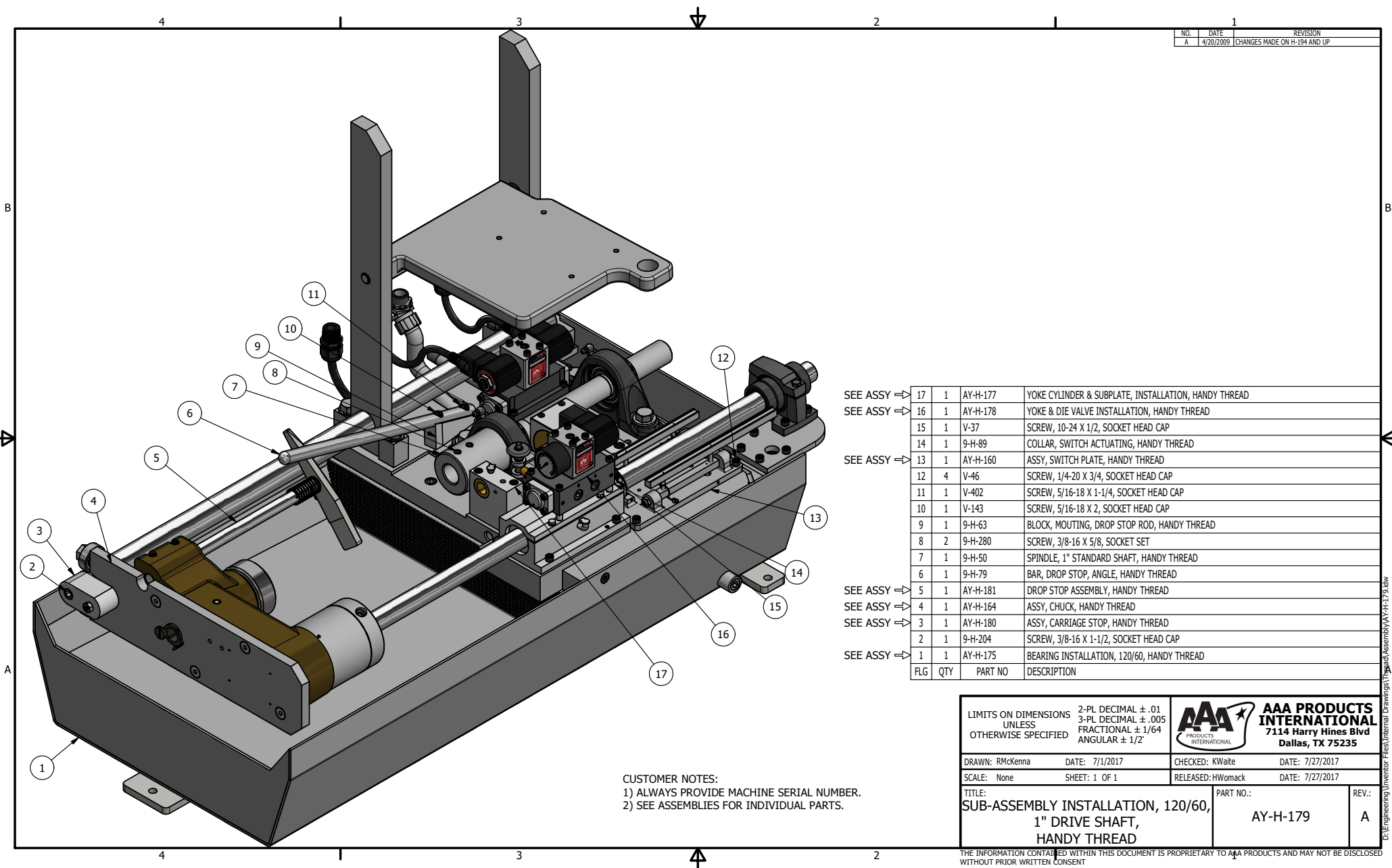
NOTES:
1) CUT LEFT SCALE TO 4" LENGTH

SEE ASSY ⇒	13	1	9-H-285	DECAL, AAA LOGO, LARGE
	12	1	AY-H-GBK	KIT, BUSHING, ROD GUIDE, HANDY THREAD
	11	1	9-H-71	NAMEPLATE, HANDY THREAD
	10	4	V-212	SCREW, 2 X 3/16, DRIVE, TYPE U, OVAL HEAD, 316 SS
SEE ASSY ⇒	9	1	AY-H-226	AIR LINE INSTALLATION, HANDY THREAD
SEE ASSY ⇒	8	1	AY-H-228	YOKE & COOLANT INTSL, 1" DRIVE SHAFT, HANDY THREAD
	7	2	9-H-56	SCALE, 1/4" X 6" LONG
SEE ASSY ⇒	6	2	AY-H-163	ASSY, SWITCH DOG, HANDY THREAD
SEE ASSY ⇒	5	1	AY-H-219-023	BELT INSTALLATION, 1-1/2 HP, 0.23 RATIO, 445H100 BELT, HANDY THREAD
SEE ASSY ⇒	4	1	AY-H-184	MOTOR INSTALLATION, 1-1/2 HP, 120-240/60, 1725 RPM, HANDY THREAD
SEE ASSY ⇒	3	1	AY-H-195	ELECTRIC BOX INSTALLATION, 1-1/2 HP, 230-1PH, HANDY THREAD
	2	1	9-H-64	COOLING GUARD, HANDY THREAD
SEE ASSY ⇒	1	1	AY-H-179	SUB-ASSEMBLY INSTALLATION, 120/60, 1" DRIVE SHAFT, HANDY THREAD
FLG	QTY		PART NO	DESCRIPTION

CUSTOMER NOTES:
1) ALWAYS PROVIDE MACHINE SERIAL NUMBER.
2) SEE ASSEMBLIES FOR INDIVIDUAL PARTS.

LIMITS ON DIMENSIONS UNLESS OTHERWISE SPECIFIED		2-PL DECIMAL ± .01 3-PL DECIMAL ± .005 FRACTIONAL ± 1/64 ANGULAR ± 1/2°		AAA PRODUCTS INTERNATIONAL 7114 Harry Hines Blvd Dallas, TX 75235	
DRAWN: RMckenna	DATE: 9/28/2017	CHECKED: KWaitte	DATE: 9/28/2017		
SCALE: None	SHEET: 1 OF 1	RELEASED: HWomack	DATE: 9/28/2017		
TITLE: ASSY, 1.5 HP, 120/60, 1" BORED SHAFT, 863 RPM, HANDY THREAD				PART NO.: 1.5-120.60-1.0-023	REV.: 1

THE INFORMATION CONTAINED WITHIN THIS DOCUMENT IS PROPRIETARY TO AAA PRODUCTS AND MAY NOT BE DISCLOSED WITHOUT PRIOR WRITTEN CONSENT

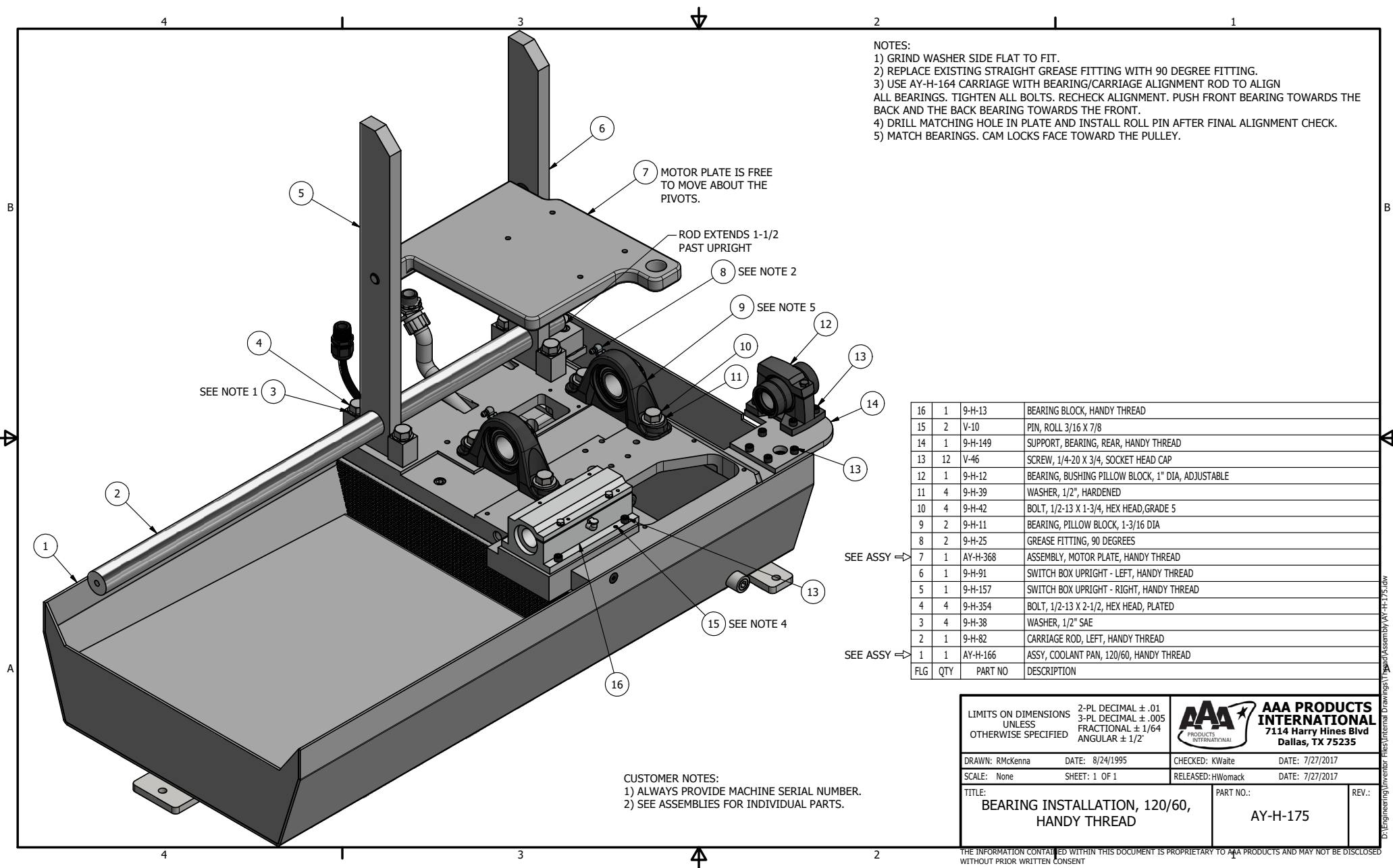


CUSTOMER NOTES:
1) ALWAYS PROVIDE MACHINE SERIAL NUMBER.
2) SEE ASSEMBLIES FOR INDIVIDUAL PARTS.

SEE ASSY ⇒	17	1	AY-H-177	YOKE CYLINDER & SUBPLATE, INSTALLATION, HANDY THREAD
SEE ASSY ⇒	16	1	AY-H-178	YOKE & DIE VALVE INSTALLATION, HANDY THREAD
	15	1	V-37	SCREW, 10-24 X 1/2, SOCKET HEAD CAP
	14	1	9-H-89	COLLAR, SWITCH ACTUATING, HANDY THREAD
SEE ASSY ⇒	13	1	AY-H-160	ASSY, SWITCH PLATE, HANDY THREAD
	12	4	V-46	SCREW, 1/4-20 X 3/4, SOCKET HEAD CAP
	11	1	V-402	SCREW, 5/16-18 X 1-1/4, SOCKET HEAD CAP
	10	1	V-143	SCREW, 5/16-18 X 2, SOCKET HEAD CAP
	9	1	9-H-63	BLOCK, MOUTING, DROP STOP ROD, HANDY THREAD
	8	2	9-H-280	SCREW, 3/8-16 X 5/8, SOCKET SET
	7	1	9-H-50	SPINDLE, 1" STANDARD SHAFT, HANDY THREAD
	6	1	9-H-79	BAR, DROP STOP, ANGLE, HANDY THREAD
SEE ASSY ⇒	5	1	AY-H-181	DROP STOP ASSEMBLY, HANDY THREAD
SEE ASSY ⇒	4	1	AY-H-164	ASSY, CHUCK, HANDY THREAD
SEE ASSY ⇒	3	1	AY-H-180	ASSY, CARRIAGE STOP, HANDY THREAD
	2	1	9-H-204	SCREW, 3/8-16 X 1-1/2, SOCKET HEAD CAP
SEE ASSY ⇒	1	1	AY-H-175	BEARING INSTALLATION, 120/60, HANDY THREAD
FLG	QTY		PART NO	DESCRIPTION


LIMITS ON DIMENSIONS UNLESS OTHERWISE SPECIFIED		2-PL DECIMAL ± .01 3-PL DECIMAL ± .005 FRACTIONAL ± 1/64 ANGULAR ± 1/2°		AAA PRODUCTS INTERNATIONAL 7114 Harry Hines Blvd Dallas, TX 75235	
DRAWN: RMckenna	DATE: 7/1/2017	CHECKED: KWaitte	DATE: 7/27/2017		
SCALE: None	SHEET: 1 OF 1	RELEASED: HWomack	DATE: 7/27/2017		
TITLE: SUB-ASSEMBLY INSTALLATION, 120/60, 1" DRIVE SHAFT, HANDY THREAD				PART NO.: AY-H-179	REV.: A

THE INFORMATION CONTAINED WITHIN THIS DOCUMENT IS PROPRIETARY TO AAA PRODUCTS AND MAY NOT BE DISCLOSED WITHOUT PRIOR WRITTEN CONSENT



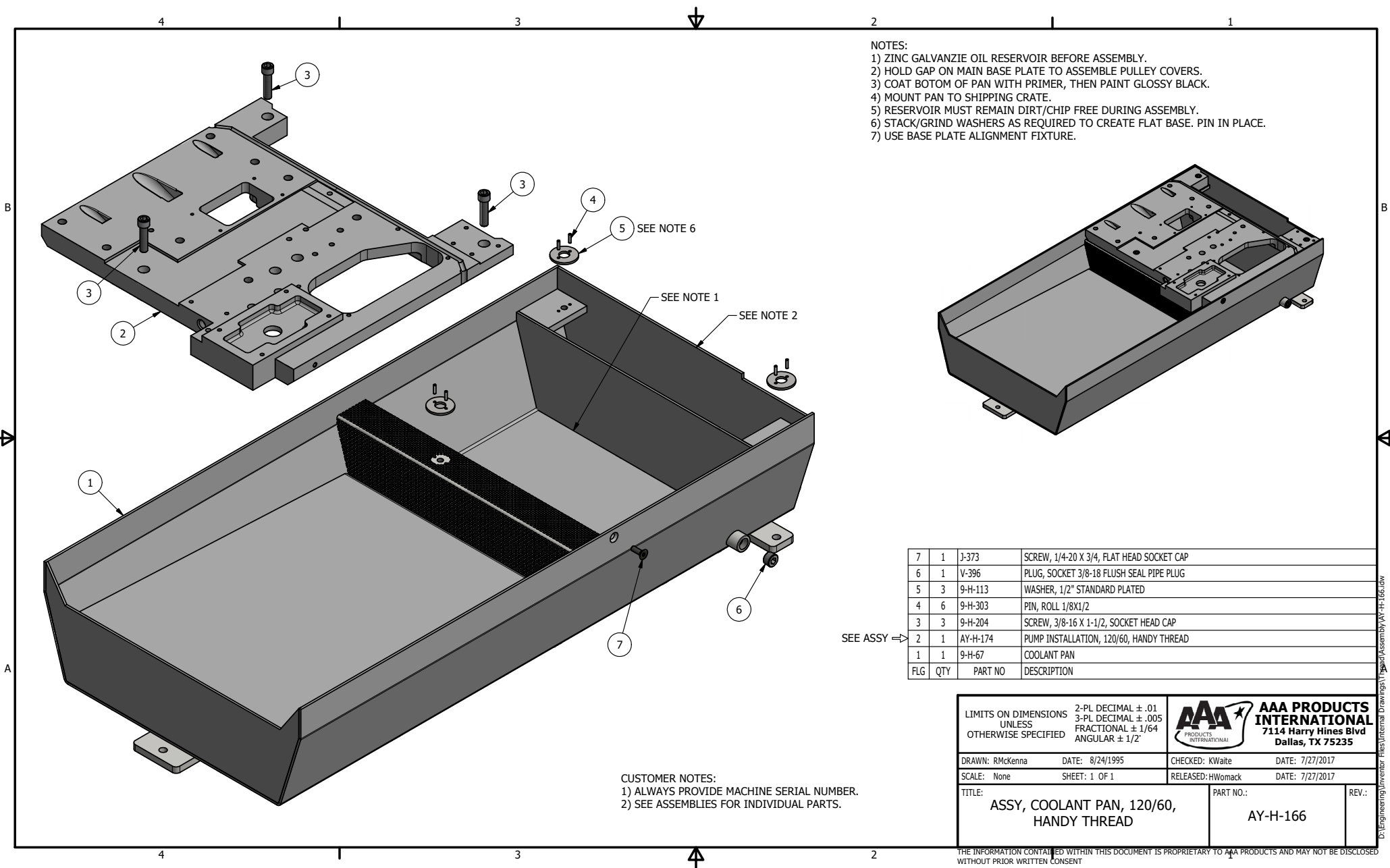
- NOTES:
- 1) GRIND WASHER SIDE FLAT TO FIT.
 - 2) REPLACE EXISTING STRAIGHT GREASE FITTING WITH 90 DEGREE FITTING.
 - 3) USE AY-H-164 CARRIAGE WITH BEARING/CARRIAGE ALIGNMENT ROD TO ALIGN ALL BEARINGS. TIGHTEN ALL BOLTS. RECHECK ALIGNMENT. PUSH FRONT BEARING TOWARDS THE BACK AND THE BACK BEARING TOWARDS THE FRONT.
 - 4) DRILL MATCHING HOLE IN PLATE AND INSTALL ROLL PIN AFTER FINAL ALIGNMENT CHECK.
 - 5) MATCH BEARINGS. CAM LOCKS FACE TOWARD THE PULLEY.

16	1	9-H-13	BEARING BLOCK, HANDY THREAD
15	2	V-10	PIN, ROLL 3/16 X 7/8
14	1	9-H-149	SUPPORT, BEARING, REAR, HANDY THREAD
13	12	V-46	SCREW, 1/4-20 X 3/4, SOCKET HEAD CAP
12	1	9-H-12	BEARING, BUSHING PILLOW BLOCK, 1" DIA, ADJUSTABLE
11	4	9-H-39	WASHER, 1/2", HARDENED
10	4	9-H-42	BOLT, 1/2-13 X 1-3/4, HEX HEAD, GRADE 5
9	2	9-H-11	BEARING, PILLOW BLOCK, 1-3/16 DIA
8	2	9-H-25	GREASE FITTING, 90 DEGREES
7	1	AY-H-368	ASSEMBLY, MOTOR PLATE, HANDY THREAD
6	1	9-H-91	SWITCH BOX UPRIGHT - LEFT, HANDY THREAD
5	1	9-H-157	SWITCH BOX UPRIGHT - RIGHT, HANDY THREAD
4	4	9-H-354	BOLT, 1/2-13 X 2-1/2, HEX HEAD, PLATED
3	4	9-H-38	WASHER, 1/2" SAE
2	1	9-H-82	CARRIAGE ROD, LEFT, HANDY THREAD
1	1	AY-H-166	ASSY, COOLANT PAN, 120/60, HANDY THREAD
FLG	QTY	PART NO	DESCRIPTION

LIMITS ON DIMENSIONS UNLESS OTHERWISE SPECIFIED		2-PL DECIMAL ± .01 3-PL DECIMAL ± .005 FRACTIONAL ± 1/64 ANGULAR ± 1/2°		 AAA PRODUCTS INTERNATIONAL 7114 Harry Hines Blvd Dallas, TX 75235	
DRAWN: RMckenna		DATE: 8/24/1995		CHECKED: KWalte	
SCALE: None		SHEET: 1 OF 1		DATE: 7/27/2017	
TITLE: BEARING INSTALLATION, 120/60, HANDY THREAD				PART NO.: AY-H-175	
				REV.:	


CUSTOMER NOTES:
1) ALWAYS PROVIDE MACHINE SERIAL NUMBER.
2) SEE ASSEMBLIES FOR INDIVIDUAL PARTS.

THE INFORMATION CONTAINED WITHIN THIS DOCUMENT IS PROPRIETARY TO AAA PRODUCTS AND MAY NOT BE DISCLOSED WITHOUT PRIOR WRITTEN CONSENT



- NOTES:
- 1) ZINC GALVANZIE OIL RESERVOIR BEFORE ASSEMBLY.
 - 2) HOLD GAP ON MAIN BASE PLATE TO ASSEMBLE PULLEY COVERS.
 - 3) COAT BOTOM OF PAN WITH PRIMER, THEN PAINT GLOSSY BLACK.
 - 4) MOUNT PAN TO SHIPPING CRATE.
 - 5) RESERVOIR MUST REMAIN DIRT/CHIP FREE DURING ASSEMBLY.
 - 6) STACK/GRIND WASHERS AS REQUIRED TO CREATE FLAT BASE. PIN IN PLACE.
 - 7) USE BASE PLATE ALIGNMENT FIXTURE.

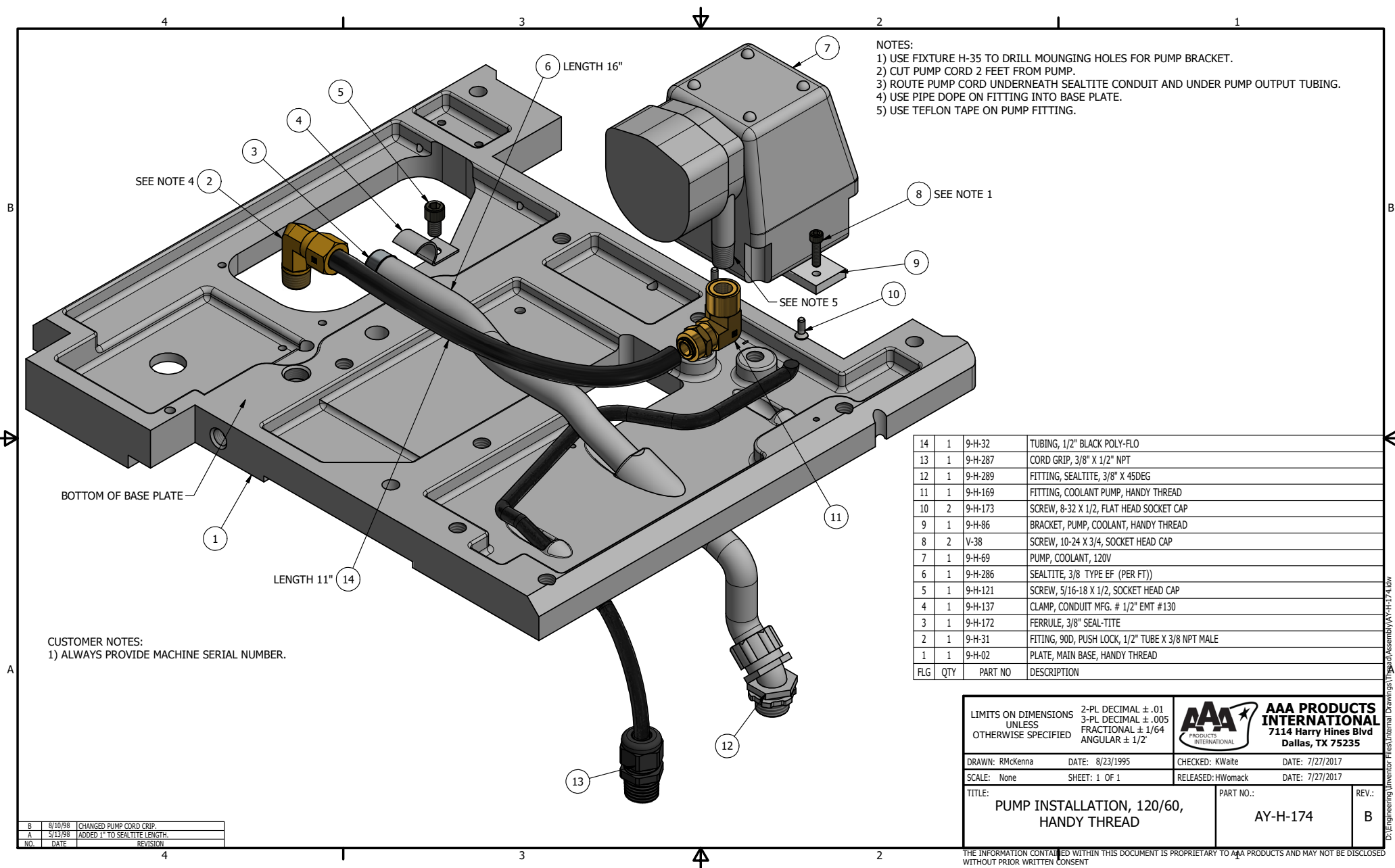
7	1	J-373	SCREW, 1/4-20 X 3/4, FLAT HEAD SOCKET CAP
6	1	V-396	PLUG, SOCKET 3/8-18 FLUSH SEAL PIPE PLUG
5	3	9-H-113	WASHER, 1/2" STANDARD PLATED
4	6	9-H-303	PIN, ROLL 1/8X1/2
3	3	9-H-204	SCREW, 3/8-16 X 1-1/2, SOCKET HEAD CAP
2	1	AY-H-174	PUMP INSTALLATION, 120/60, HANDY THREAD
1	1	9-H-67	COOLANT PAN
FLG	QTY	PART NO	DESCRIPTION

LIMITS ON DIMENSIONS UNLESS OTHERWISE SPECIFIED		2-PL DECIMAL ± .01 3-PL DECIMAL ± .005 FRACTIONAL ± 1/64 ANGULAR ± 1/2°		 AAA PRODUCTS INTERNATIONAL 7114 Harry Hines Blvd Dallas, TX 75235	
DRAWN: RMckenna		DATE: 8/24/1995		CHECKED: KWalte	
SCALE: None		SHEET: 1 OF 1		RELEASED: HWomack	
TITLE: ASSY, COOLANT PAN, 120/60, HANDY THREAD				PART NO.: AY-H-166	
				REV.:	

CUSTOMER NOTES:

- 1) ALWAYS PROVIDE MACHINE SERIAL NUMBER.
- 2) SEE ASSEMBLIES FOR INDIVIDUAL PARTS.

THE INFORMATION CONTAINED WITHIN THIS DOCUMENT IS PROPRIETARY TO AAA PRODUCTS AND MAY NOT BE DISCLOSED WITHOUT PRIOR WRITTEN CONSENT



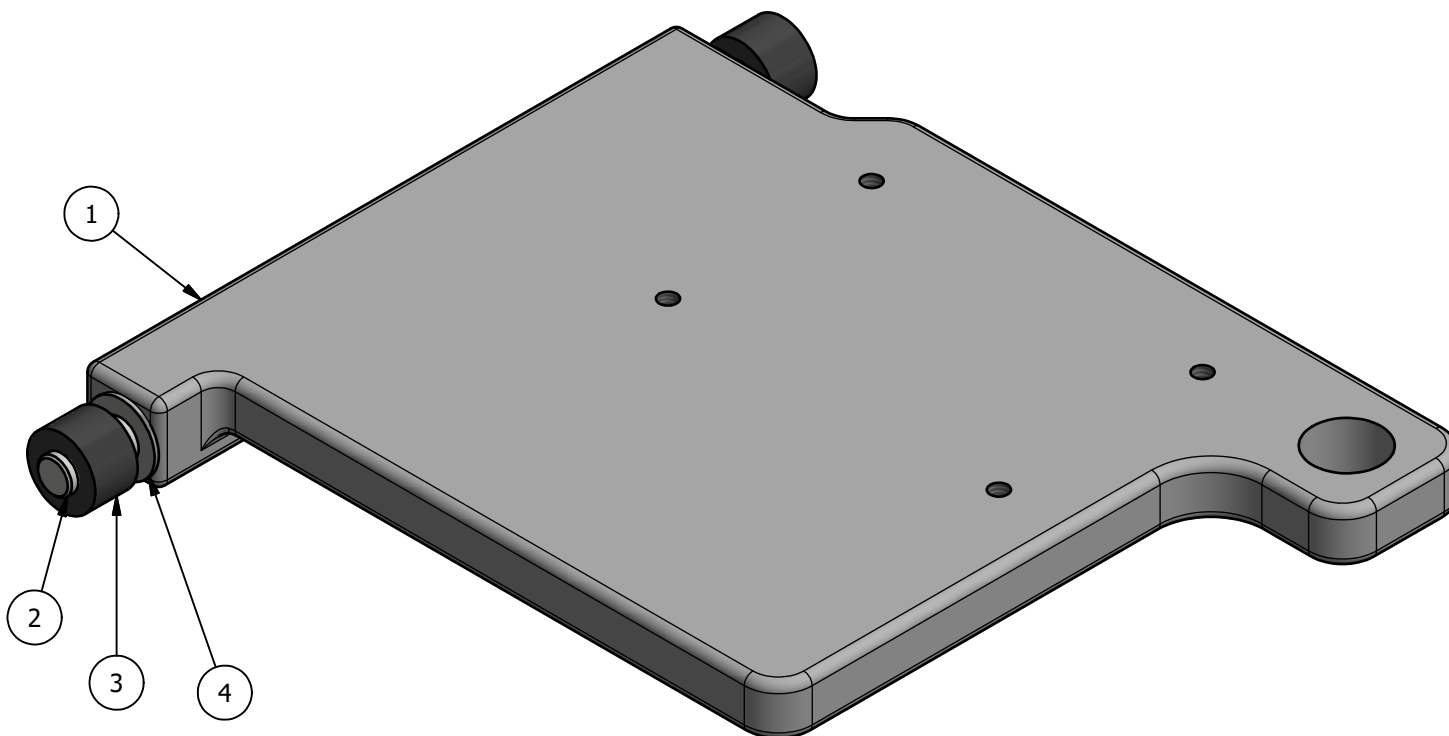
- NOTES:
- 1) USE FIXTURE H-35 TO DRILL MOUNGING HOLES FOR PUMP BRACKET.
 - 2) CUT PUMP CORD 2 FEET FROM PUMP.
 - 3) ROUTE PUMP CORD UNDERNEATH SEALTITE CONDUIT AND UNDER PUMP OUTPUT TUBING.
 - 4) USE PIPE DOPE ON FITTING INTO BASE PLATE.
 - 5) USE TEFLON TAPE ON PUMP FITTING.

14	1	9-H-32	TUBING, 1/2" BLACK POLY-FLO
13	1	9-H-287	CORD GRIP, 3/8" X 1/2" NPT
12	1	9-H-289	FITTING, SEALTITE, 3/8" X 45DEG
11	1	9-H-169	FITTING, COOLANT PUMP, HANDY THREAD
10	2	9-H-173	SCREW, 8-32 X 1/2, FLAT HEAD SOCKET CAP
9	1	9-H-86	BRACKET, PUMP, COOLANT, HANDY THREAD
8	2	V-38	SCREW, 10-24 X 3/4, SOCKET HEAD CAP
7	1	9-H-69	PUMP, COOLANT, 120V
6	1	9-H-286	SEALTITE, 3/8 TYPE EF (PER FT))
5	1	9-H-121	SCREW, 5/16-18 X 1/2, SOCKET HEAD CAP
4	1	9-H-137	CLAMP, CONDUIT MFG. # 1/2" EMT #130
3	1	9-H-172	FERRULE, 3/8" SEAL-TITE
2	1	9-H-31	FITTING, 90D, PUSH LOCK, 1/2" TUBE X 3/8 NPT MALE
1	1	9-H-02	PLATE, MAIN BASE, HANDY THREAD
FLG	QTY	PART NO	DESCRIPTION


LIMITS ON DIMENSIONS UNLESS OTHERWISE SPECIFIED		2-PL DECIMAL $\pm .01$ 3-PL DECIMAL $\pm .005$ FRACTIONAL $\pm 1/64$ ANGULAR $\pm 1/2^\circ$	AAA PRODUCTS INTERNATIONAL 7114 Harry Hines Blvd Dallas, TX 75235	
DRAWN: RMcKenna	DATE: 8/23/1995	CHECKED: KWaitte	DATE: 7/27/2017	
SCALE: None	SHEET: 1 OF 1	RELEASED: HWomack	DATE: 7/27/2017	
TITLE: PUMP INSTALLATION, 120/60, HANDY THREAD			PART NO.: AY-H-174	REV.: B

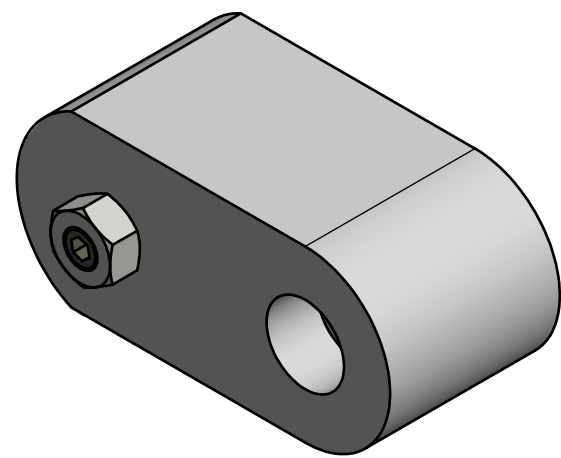
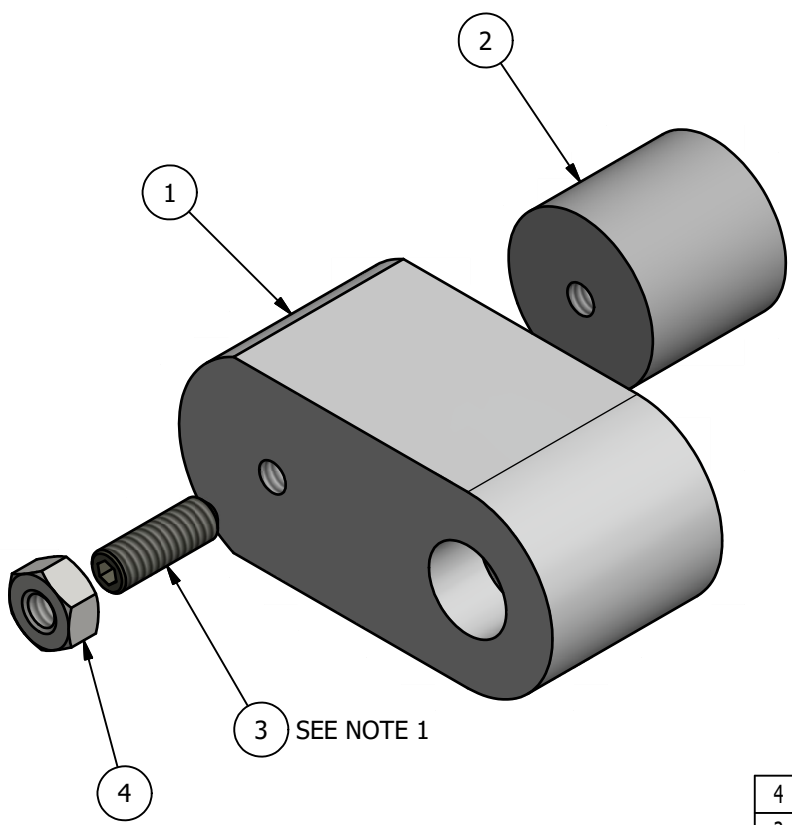
B	8/10/98	CHANGED PUMP CORD CRIP.
A	5/13/98	ADDED 1" TO SEALTITE LENGTH.
NO.	DATE	REVISION

THE INFORMATION CONTAINED WITHIN THIS DOCUMENT IS PROPRIETARY TO AAA PRODUCTS AND MAY NOT BE DISCLOSED WITHOUT PRIOR WRITTEN CONSENT




4	2	9-H-38	WASHER, 1/2" SAE
3	2	9-H-26	BUSHING, RUBBER FOR MOTOR
2	2	9-H-115	PIN, 1/2 X 2-1/4 DOWEL
1	1	9-H-01	BASE - MOTOR MOUNT, HANDY THREAD
FLG	QTY	PART NO	DESCRIPTION

LIMITS ON DIMENSIONS UNLESS OTHERWISE SPECIFIED 2-PL DECIMAL $\pm .01$ 3-PL DECIMAL $\pm .005$ FRACTIONAL $\pm 1/64$ ANGULAR $\pm 1/2^\circ$		 AAA PRODUCTS INTERNATIONAL 7114 Harry Hines Blvd Dallas, TX 75235	
DRAWN: RMckenna		DATE: 6/30/2017	
SCALE: None		SHEET: 1 OF 1	
CHECKED: KWait		DATE: 6/30/2017	
RELEASED: HWomack		DATE: 6/30/2017	
TITLE: ASSEMBLY, MOTOR PLATE, HANDY THREAD		PART NO.: AY-H-368	REV.:

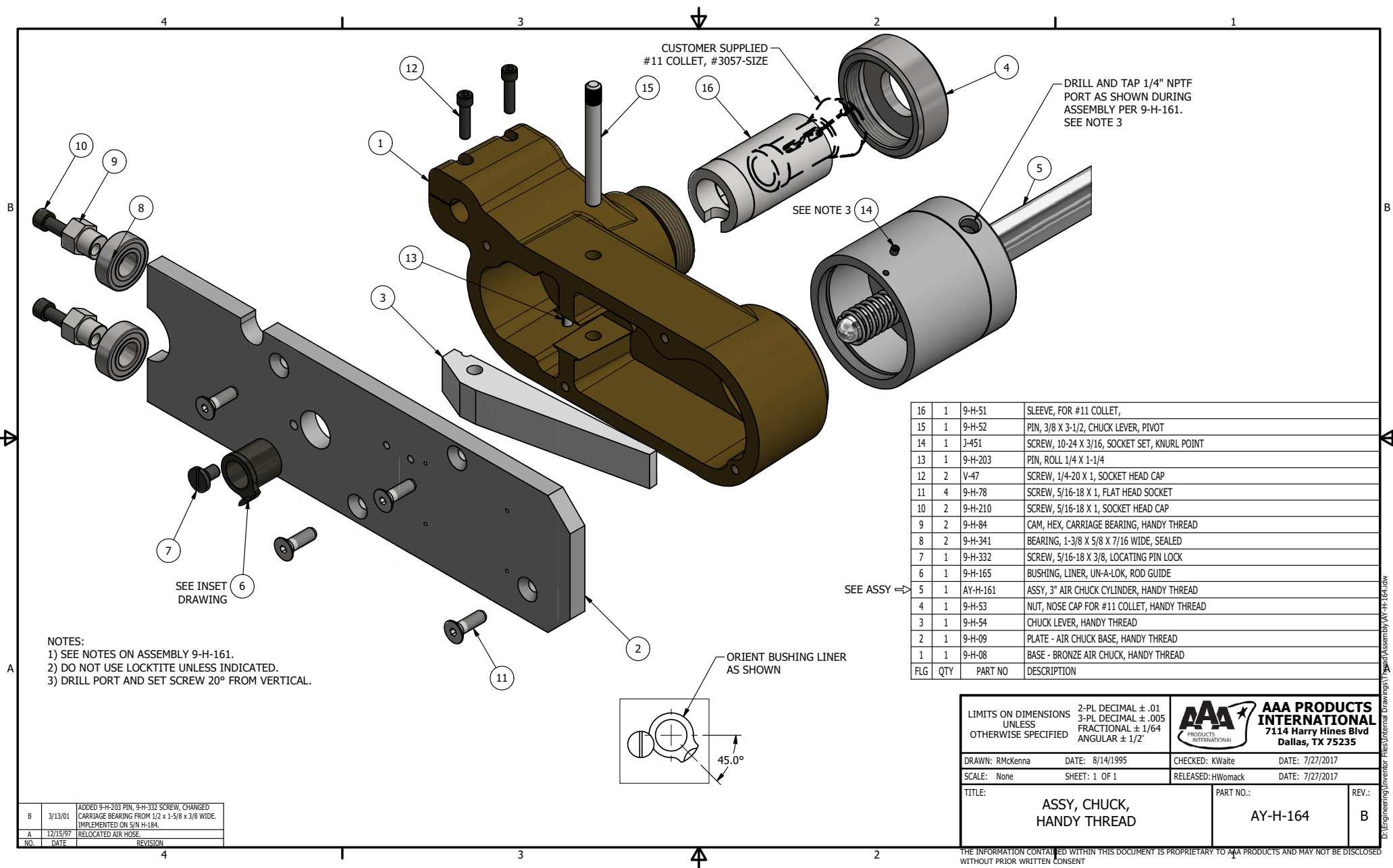


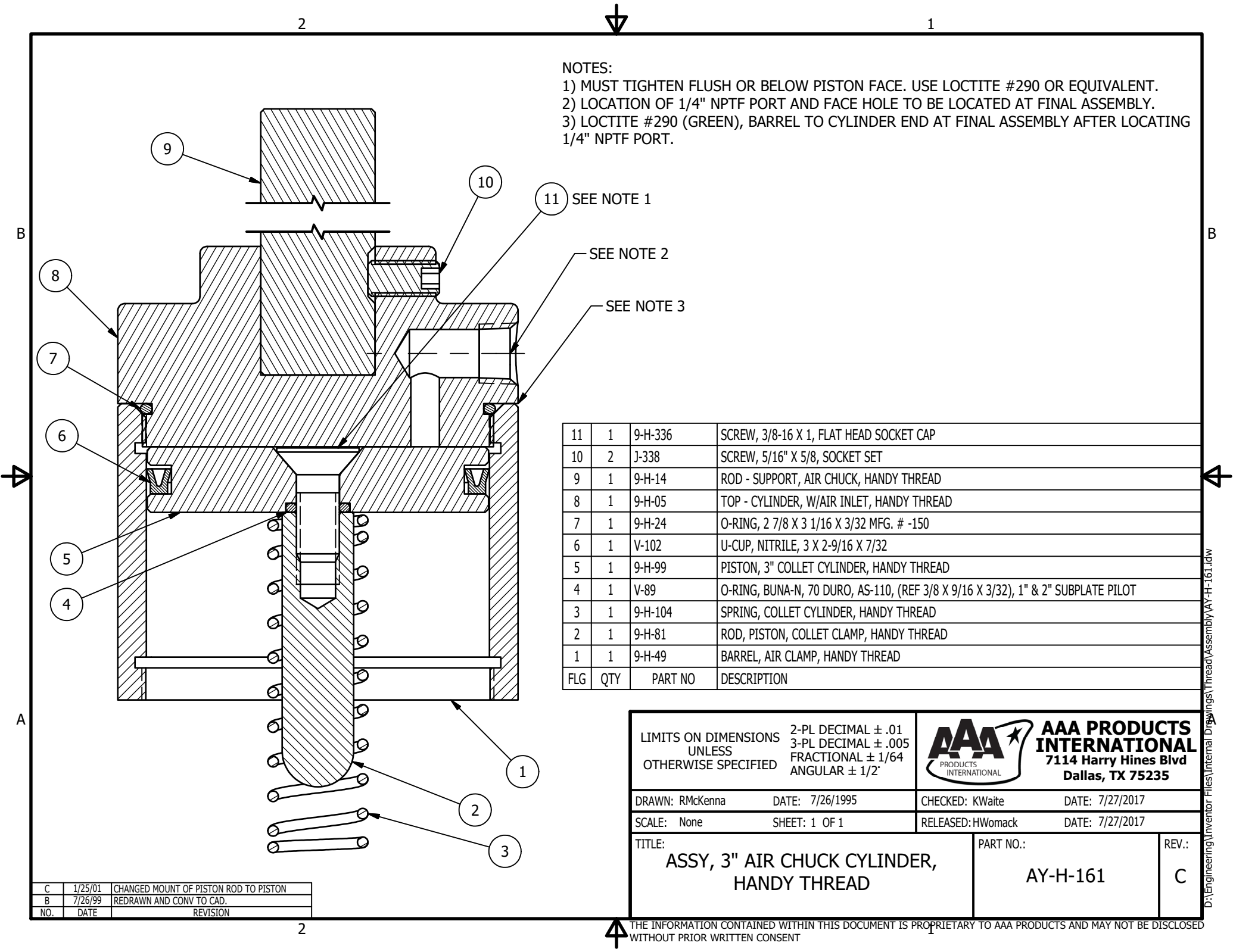
NOTES:
1) LOCTITE SCREW 1/2" REMAINING OUT OF MAGNET.

4	1	J-296	NUT, 1/4-20, HEX, PLATED
3	1	9-H-128	SCREW, 1/4-20 X 3/4, CUP POINT SOCKET SET
2	1	9-H-57	MAGNET, 1-1/16" X 1" ROUND, 18 LBS PULL FORCE
1	1	9-H-95	CARRIAGE STOP, HANDY THREAD
FLG	QTY	PART NO	DESCRIPTION

LIMITS ON DIMENSIONS UNLESS OTHERWISE SPECIFIED		2-PL DECIMAL ± .01 3-PL DECIMAL ± .005 FRACTIONAL ± 1/64 ANGULAR ± 1/2°		 AAA PRODUCTS INTERNATIONAL 7114 Harry Hines Blvd Dallas, TX 75235	
DRAWN: RMcKenna		DATE: 9/1/1995		CHECKED: KWait	
SCALE: None		SHEET: 1 OF 1		DATE: 3/13/2017	
RELEASED: HWomack		DATE: 3/13/2017			
TITLE: ASSY, CARRIAGE STOP, HANDY THREAD				PART NO.: AY-H-180	
				REV.: A	

A	7/1/98	REVISED NOTE 1
NO.	DATE	REVISION





NOTES:
1) MUST TIGHTEN FLUSH OR BELOW PISTON FACE. USE LOCTITE #290 OR EQUIVALENT.
2) LOCATION OF 1/4" NPTF PORT AND FACE HOLE TO BE LOCATED AT FINAL ASSEMBLY.
3) LOCTITE #290 (GREEN), BARREL TO CYLINDER END AT FINAL ASSEMBLY AFTER LOCATING 1/4" NPTF PORT.

11	1	9-H-336	SCREW, 3/8-16 X 1, FLAT HEAD SOCKET CAP
10	2	J-338	SCREW, 5/16" X 5/8, SOCKET SET
9	1	9-H-14	ROD - SUPPORT, AIR CHUCK, HANDY THREAD
8	1	9-H-05	TOP - CYLINDER, W/AIR INLET, HANDY THREAD
7	1	9-H-24	O-RING, 2 7/8 X 3 1/16 X 3/32 MFG. # -150
6	1	V-102	U-CUP, NITRILE, 3 X 2-9/16 X 7/32
5	1	9-H-99	PISTON, 3" COLLET CYLINDER, HANDY THREAD
4	1	V-89	O-RING, BUNA-N, 70 DURO, AS-110, (REF 3/8 X 9/16 X 3/32), 1" & 2" SUBPLATE PILOT
3	1	9-H-104	SPRING, COLLET CYLINDER, HANDY THREAD
2	1	9-H-81	ROD, PISTON, COLLET CLAMP, HANDY THREAD
1	1	9-H-49	BARREL, AIR CLAMP, HANDY THREAD
FLG	QTY	PART NO	DESCRIPTION

C	1/25/01	CHANGED MOUNT OF PISTON ROD TO PISTON
B	7/26/99	REDRAWN AND CONV TO CAD.
NO.	DATE	REVISION

LIMITS ON DIMENSIONS
UNLESS
OTHERWISE SPECIFIED

2-PL DECIMAL ± .01
3-PL DECIMAL ± .005
FRACTIONAL ± 1/64
ANGULAR ± 1/2°

AAA
PRODUCTS
INTERNATIONAL

**AAA PRODUCTS
INTERNATIONAL**
7114 Harry Hines Blvd
Dallas, TX 75235

DRAWN: RMcKenna DATE: 7/26/1995

CHECKED: KWaiter DATE: 7/27/2017

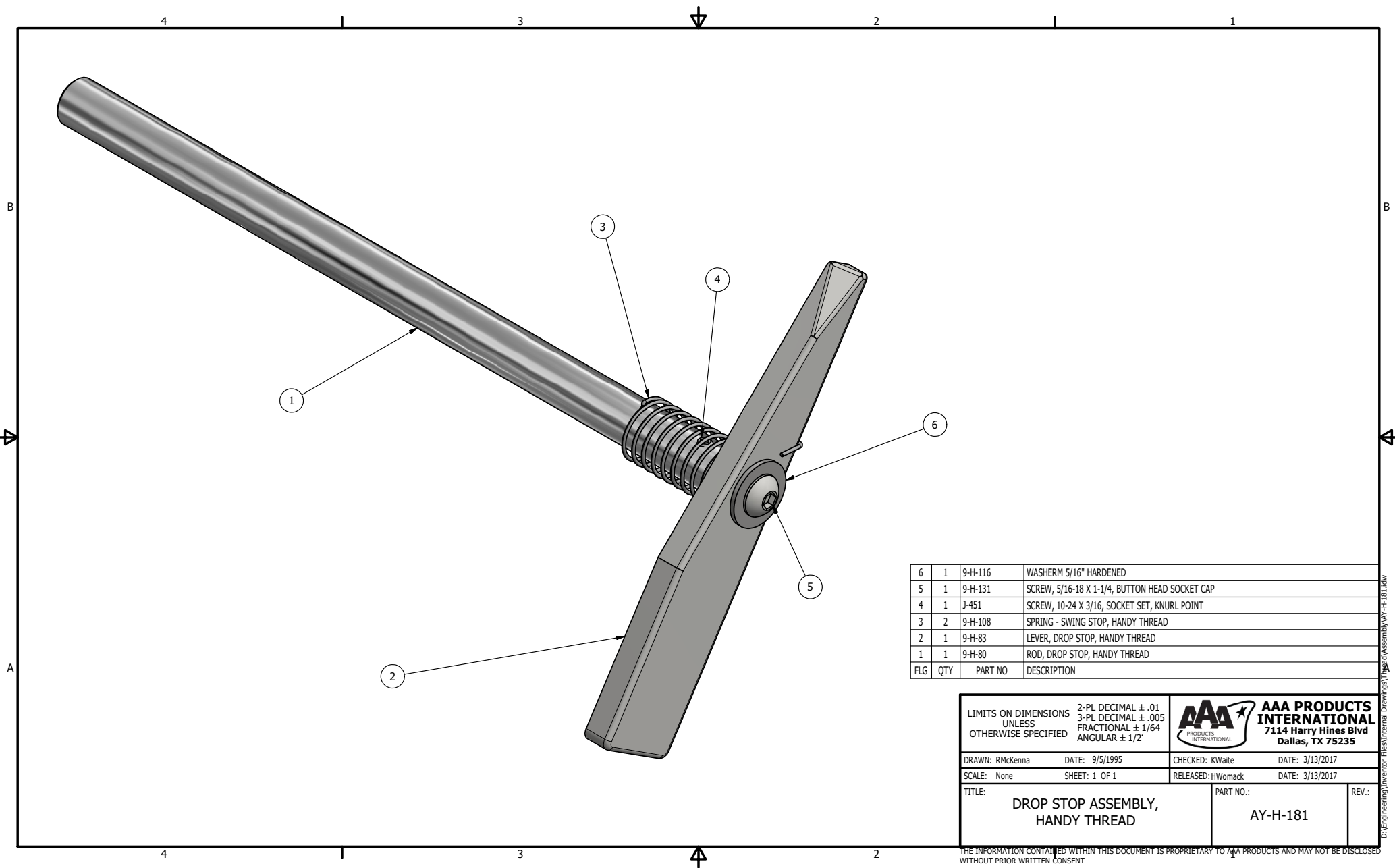
SCALE: None SHEET: 1 OF 1

RELEASED: HWomack DATE: 7/27/2017

TITLE:
**ASSY, 3" AIR CHUCK CYLINDER,
HANDY THREAD**

PART NO.:
AY-H-161

REV.:
C

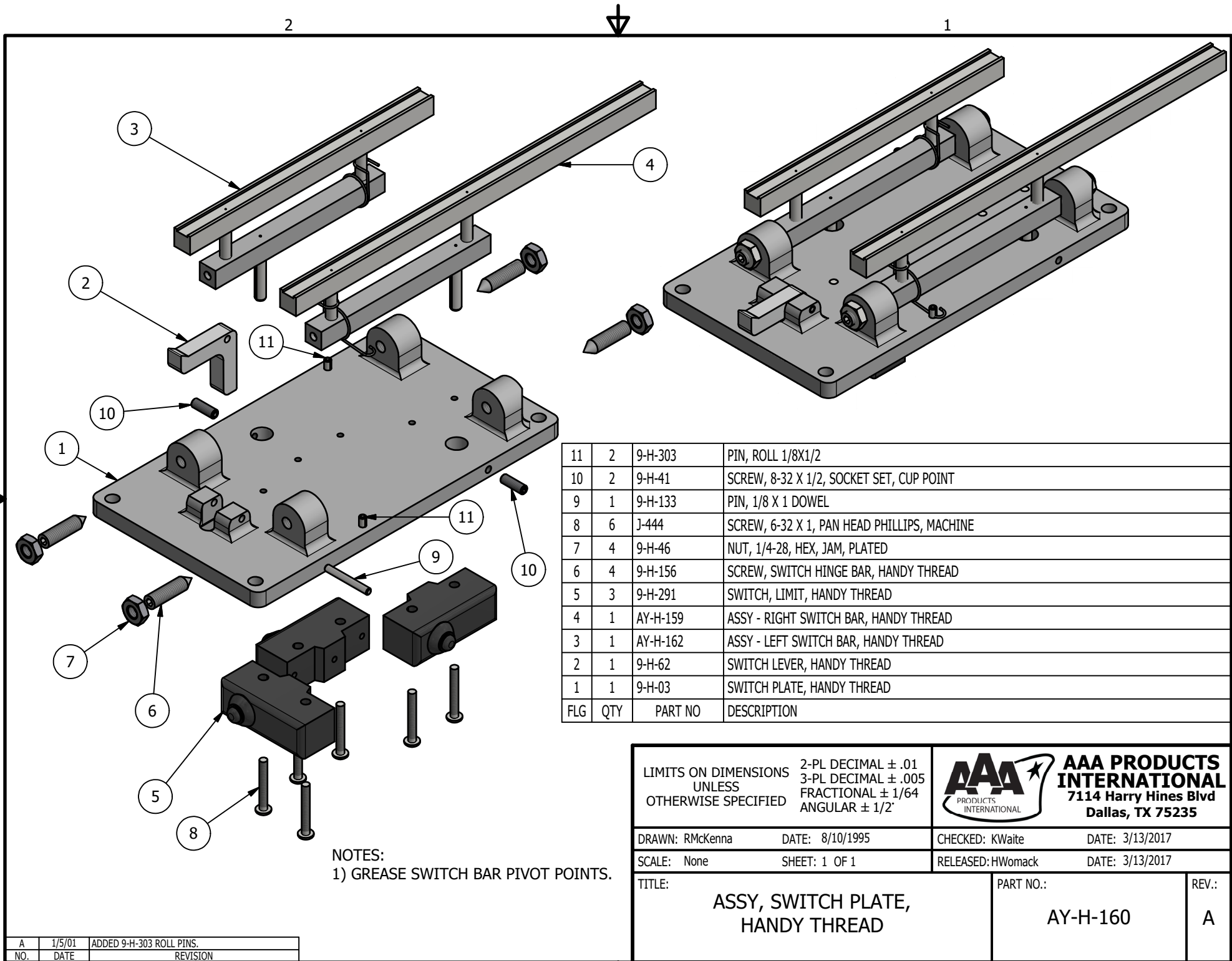


6	1	9-H-116	WASHER 5/16" HARDENED
5	1	9-H-131	SCREW, 5/16-18 X 1-1/4, BUTTON HEAD SOCKET CAP
4	1	J-451	SCREW, 10-24 X 3/16, SOCKET SET, KNURL POINT
3	2	9-H-108	SPRING - SWING STOP, HANDY THREAD
2	1	9-H-83	LEVER, DROP STOP, HANDY THREAD
1	1	9-H-80	ROD, DROP STOP, HANDY THREAD
FLG	QTY	PART NO	DESCRIPTION

LIMITS ON DIMENSIONS UNLESS OTHERWISE SPECIFIED		2-PL DECIMAL $\pm .01$ 3-PL DECIMAL $\pm .005$ FRACTIONAL $\pm 1/64$ ANGULAR $\pm 1/2^\circ$	AAA PRODUCTS INTERNATIONAL 7114 Harry Hines Blvd Dallas, TX 75235	
DRAWN: RMckenna	DATE: 9/5/1995	CHECKED: KWalte	DATE: 3/13/2017	
SCALE: None	SHEET: 1 OF 1	RELEASED: HWomack	DATE: 3/13/2017	
TITLE: DROP STOP ASSEMBLY, HANDY THREAD			PART NO.: AY-H-181	REV.:

THE INFORMATION CONTAINED WITHIN THIS DOCUMENT IS PROPRIETARY TO AAA PRODUCTS AND MAY NOT BE DISCLOSED WITHOUT PRIOR WRITTEN CONSENT


D:\Engineering\Inventory Files\Internal Drawings\1\Head Assembly\AY-H-181.dwg

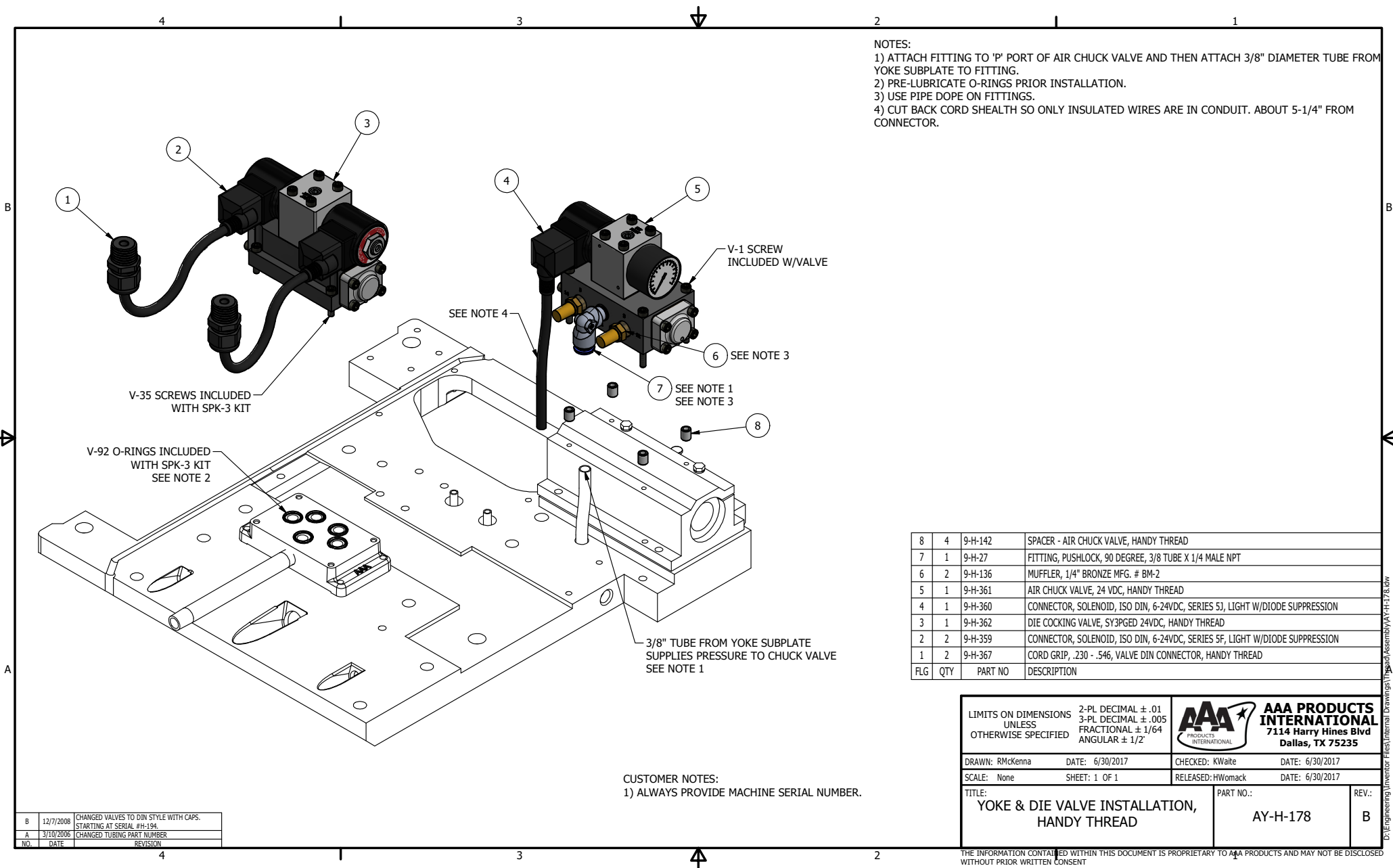


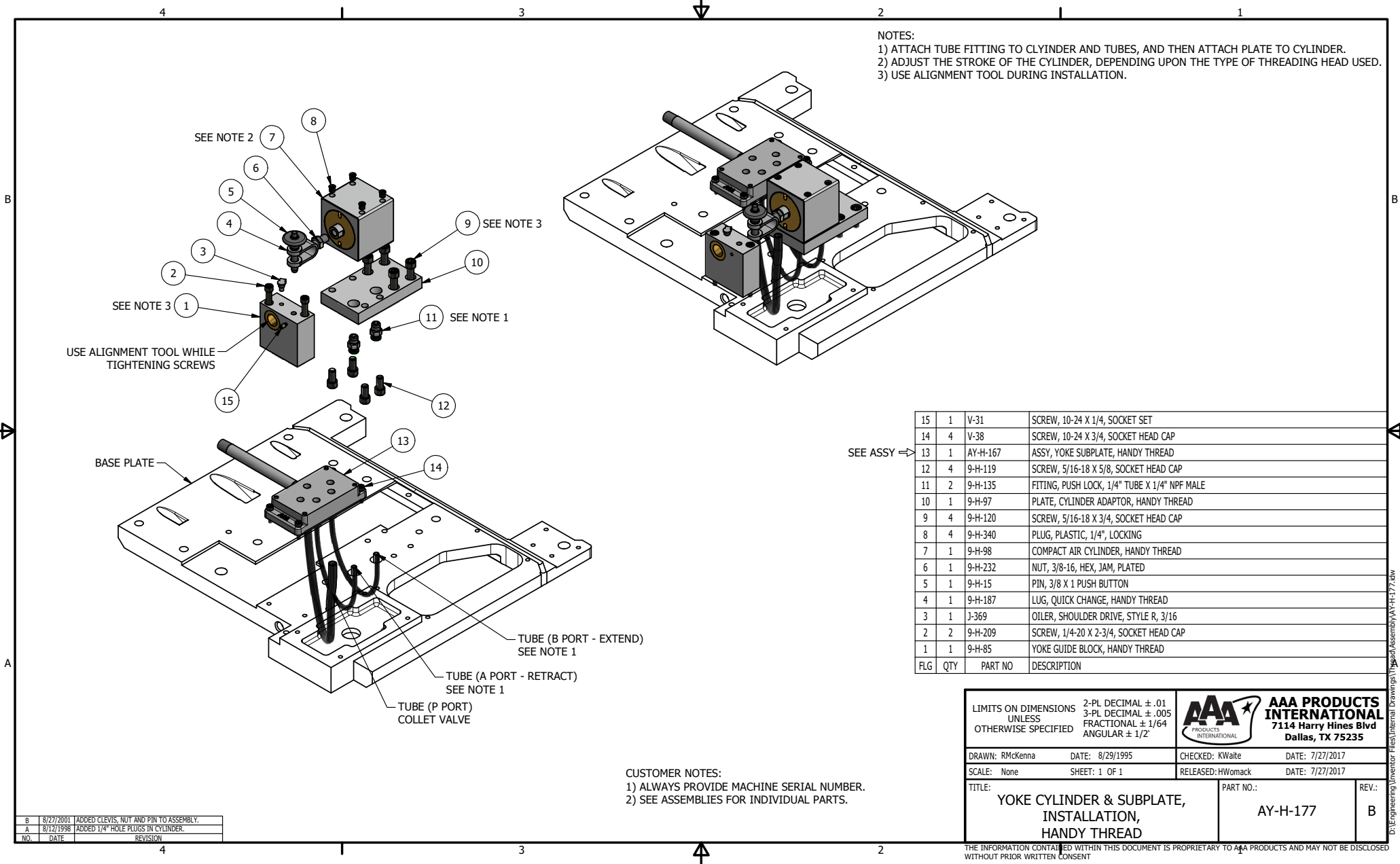
11	2	9-H-303	PIN, ROLL 1/8X1/2
10	2	9-H-41	SCREW, 8-32 X 1/2, SOCKET SET, CUP POINT
9	1	9-H-133	PIN, 1/8 X 1 DOWEL
8	6	J-444	SCREW, 6-32 X 1, PAN HEAD PHILLIPS, MACHINE
7	4	9-H-46	NUT, 1/4-28, HEX, JAM, PLATED
6	4	9-H-156	SCREW, SWITCH HINGE BAR, HANDY THREAD
5	3	9-H-291	SWITCH, LIMIT, HANDY THREAD
4	1	AY-H-159	ASSY - RIGHT SWITCH BAR, HANDY THREAD
3	1	AY-H-162	ASSY - LEFT SWITCH BAR, HANDY THREAD
2	1	9-H-62	SWITCH LEVER, HANDY THREAD
1	1	9-H-03	SWITCH PLATE, HANDY THREAD
FLG	QTY	PART NO	DESCRIPTION

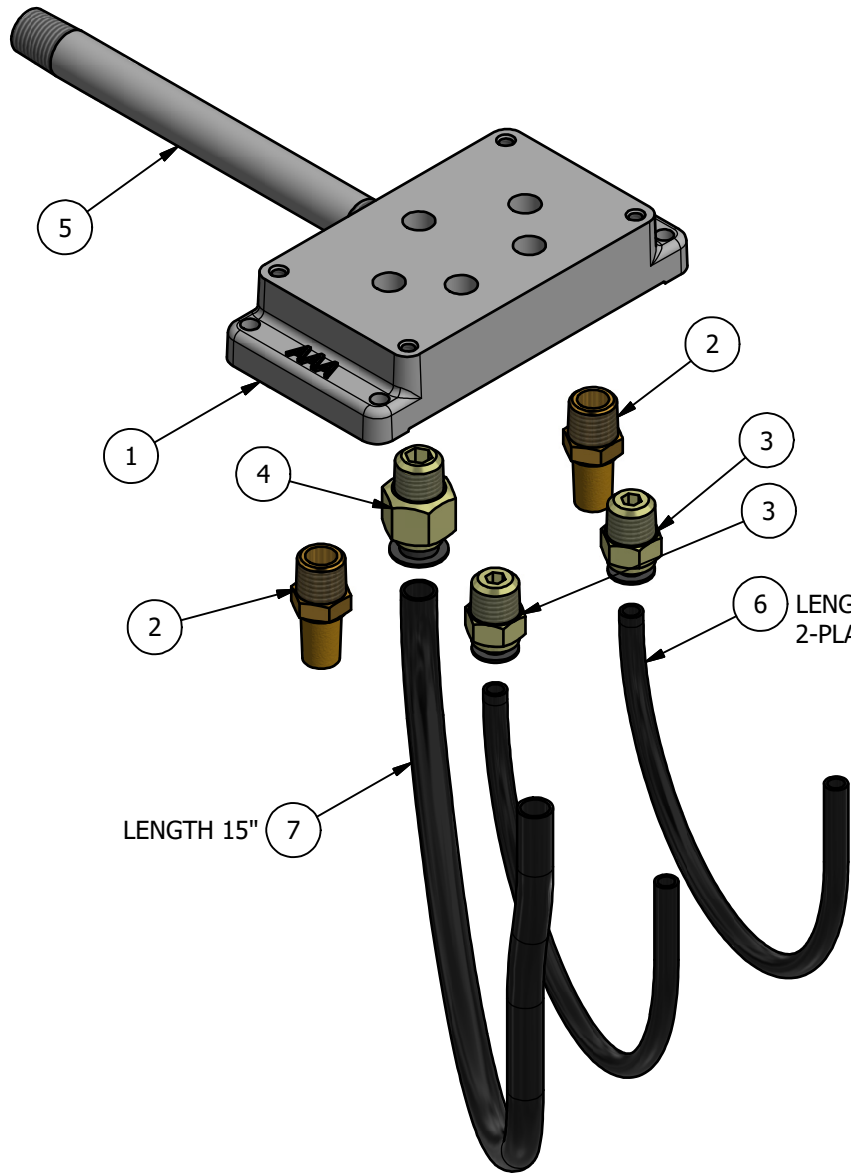
NOTES:
1) GREASE SWITCH BAR PIVOT POINTS.

A	1/5/01	ADDED 9-H-303 ROLL PINS.
NO.	DATE	REVISION

LIMITS ON DIMENSIONS UNLESS OTHERWISE SPECIFIED		2-PL DECIMAL ± .01 3-PL DECIMAL ± .005 FRACTIONAL ± 1/64 ANGULAR ± 1/2°		 AAA PRODUCTS INTERNATIONAL 7114 Harry Hines Blvd Dallas, TX 75235	
DRAWN: RMcKenna		DATE: 8/10/1995		CHECKED: KWaitte	
SCALE: None		SHEET: 1 OF 1		RELEASED: HWomack	
TITLE: ASSY, SWITCH PLATE, HANDY THREAD				PART NO.: AY-H-160	
				REV.: A	




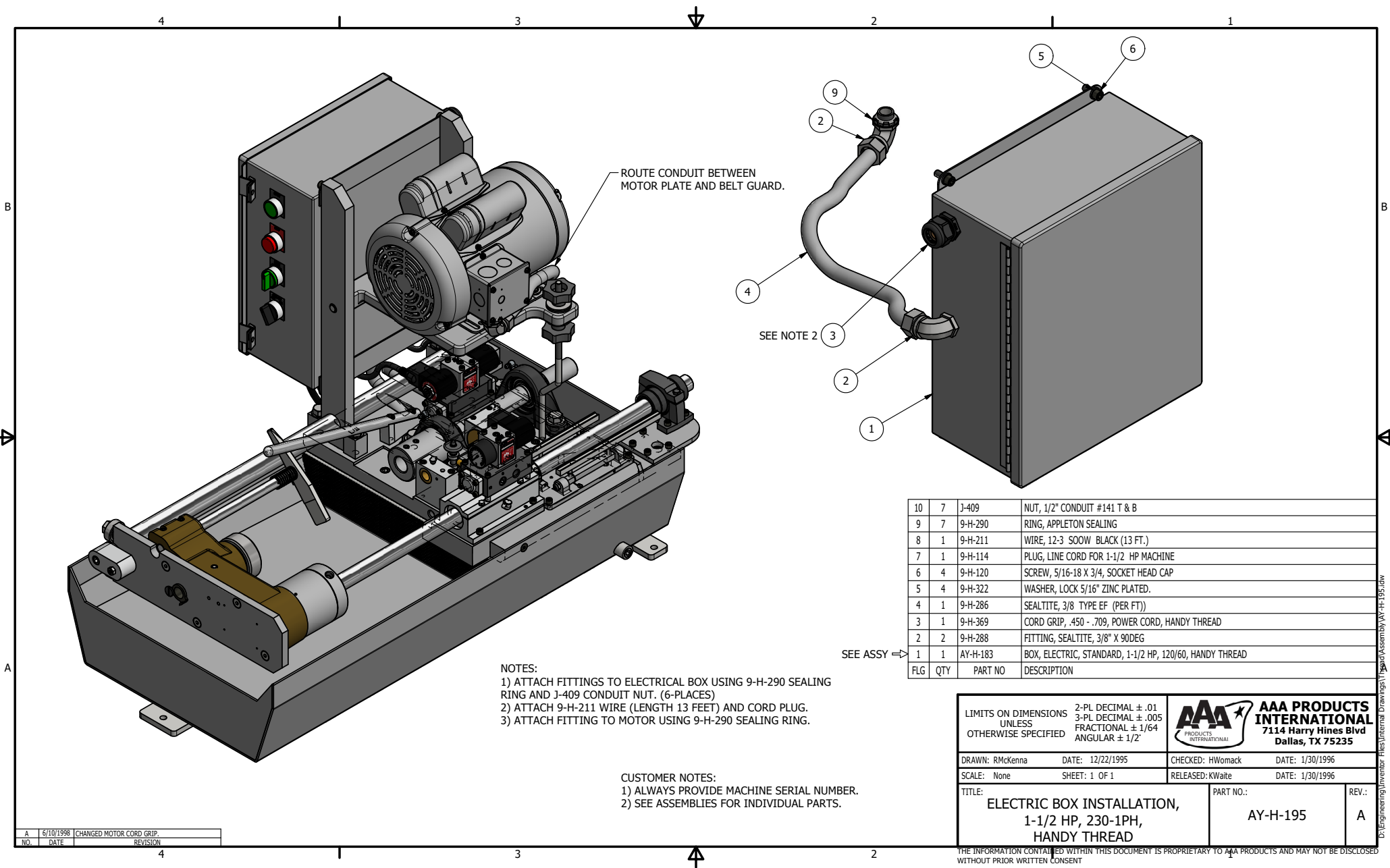


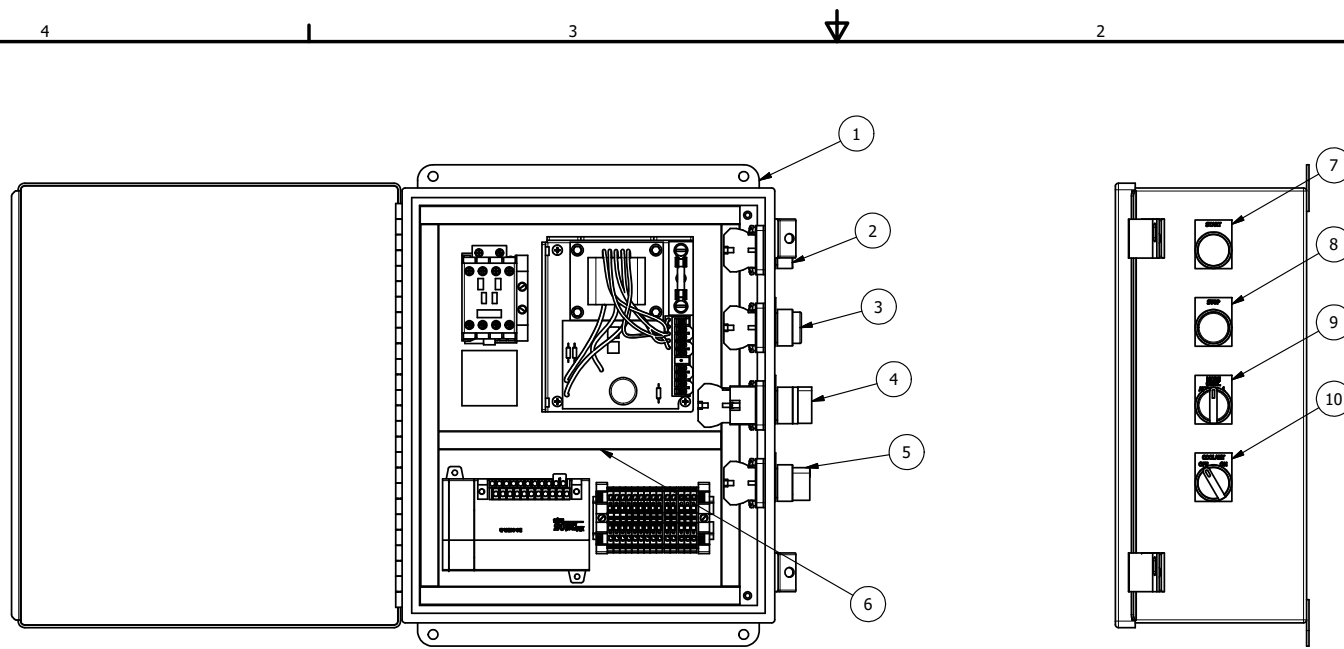


NOTES:
1) USE PIPE DOPE DURING INSTALLATION OF FITTINGS AND NIPPLE.

7	1	9-H-33	TUBING, 3\8" BLACK POLY-FLO
6	2	9-H-34	TUBING, 1\4" BLACK POLY-FLO
5	1	9-H-199	NIPPLE, 1\4" X 5-1\2" PLATED
4	1	9-H-28	FITTING, 3\8" PUSH LOCK TUBE X 1\4" MALE NPT
3	2	9-H-29	FITTING, 1\4" PUSH LOCK TUBE X 1\4" MALE NPT
2	2	9-H-136	MUFFLER, 1\4" BRONZE MFG. # BM-2
1	1	9-H-171	MODIFIED SUBPLATE SP2-1N, HANDY THREAD
FLG	QTY	PART NO	DESCRIPTION

LIMITS ON DIMENSIONS UNLESS OTHERWISE SPECIFIED		2-PL DECIMAL ± .01 3-PL DECIMAL ± .005 FRACTIONAL ± 1/64 ANGULAR ± 1/2°		 AAA PRODUCTS INTERNATIONAL 7114 Harry Hines Blvd Dallas, TX 75235			
DRAWN: RMcKenna		DATE: 8/15/1995		CHECKED: KWait			
SCALE: None		SHEET: 1 OF 1		RELEASED: HWomack			
DATE: 3/13/2017		DATE: 3/13/2017		DATE: 3/13/2017			
TITLE: ASSY, YOKE SUBPLATE, HANDY THREAD				PART NO.: AY-H-167			
				REV.:			





SEE ASSY ⇒

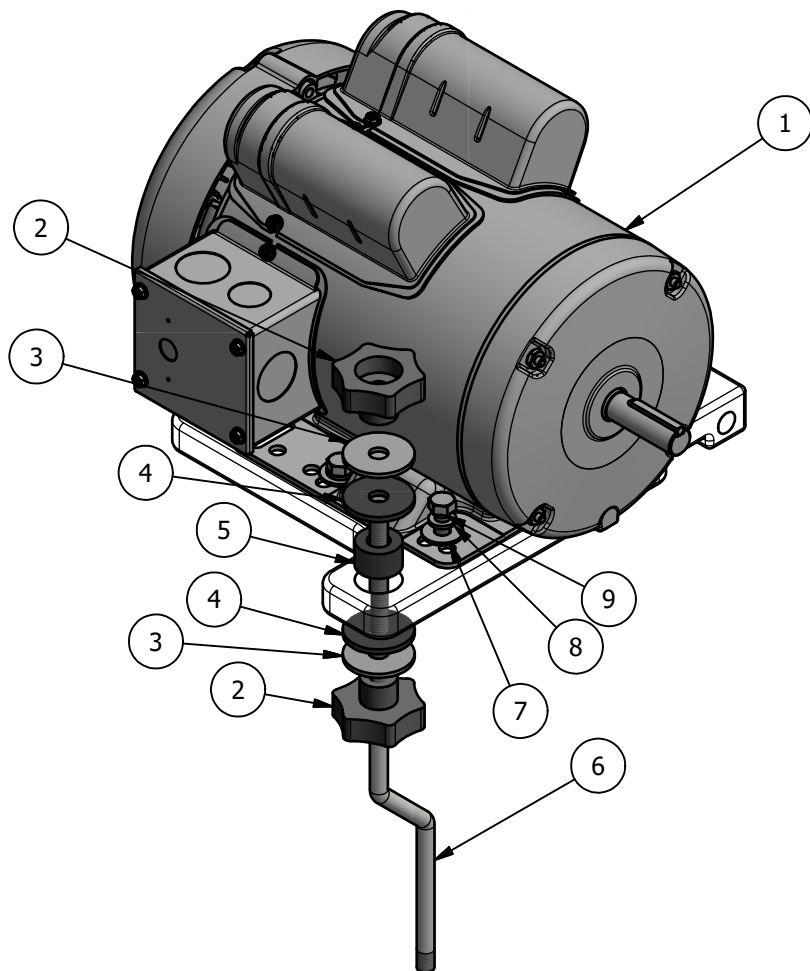
10	1	9-H-267	LEGEND PLATE, COOLANT, HANDY THREAD
9	1	9-H-268	LEGEND PLATE, MODE, HANDY THREAD
8	1	9-H-269	LEGEND PLATE, STOP, HANDY THREAD
7	1	9-H-270	LEGEND PLATE, START, HANDY THREAD
6	1	AY-H-182	PANEL, ELECTRICAL, 1-1/2 HP, 120/60, HANDY THREAD
5	1	9-H-259	SWITCH, COOLANT 2-POSITION SELECTOR
4	1	9-H-348	SWITCH, 2 POSITION LIGHT SELECTOR WITH LED BULB
3	1	9-H-261	SWITCH, RED STOP W/ N.C. CONTACT
2	1	9-H-262	SWITCH, GREEN START BUTTON
1	1	9-H-248	ENCLOSURE, ELECTRICAL, HANDY THREAD
FLG	QTY	PART NO	DESCRIPTION

F	7/12/2017	ADDED 9-H-182 TO ASSEMBLY, CHNGD TITLE.
E	10/18/2006	MADE SWITCHES AS SINGLE ASSEMBLIES. CHANGED TO AUTOMATION DIRECT. H-192 & UP.
D	3/13/2006	RMVD PANEL DETAIL, CREATED STD BOX
C	11/30/2001	CHNG MODE FRM 3 POS, RMVD CONT
B	5/31/2000	ADDED 230VAC-3PH NOTE, UPD DRW # 1N NOTES
A	7/1/1998	RMV AUX CONTACT, MODIFIED SWITCH SPACING
NO.	DATE	REVISION

CUSTOMER NOTES:
1) ALWAYS PROVIDE MACHINE SERIAL NUMBER.
2) SEE ASSEMBLIES FOR INDIVIDUAL PARTS.

LIMITS ON DIMENSIONS UNLESS OTHERWISE SPECIFIED		2-PL DECIMAL ± .01 3-PL DECIMAL ± .005 FRACTIONAL ± 1/64 ANGULAR ± 1/2°	AAA PRODUCTS INTERNATIONAL 7114 Harry Hines Blvd Dallas, TX 75235
DRAWN: RMckenna	DATE: 9/8/1995	CHECKED: KWaite	DATE: 10/18/2006
SCALE: None	SHEET: 1 OF 1	RELEASED: HWomack	DATE: 10/18/2006
TITLE: BOX, ELECTRIC, STANDARD, 1-1/2 HP, 120/60, HANDY THREAD		PART NO.: AY-H-183	REV.: F

THE INFORMATION CONTAINED WITHIN THIS DOCUMENT IS PROPRIETARY TO AAA PRODUCTS AND MAY NOT BE DISCLOSED WITHOUT PRIOR WRITTEN CONSENT



9	4	9-H-205	BOLT, 5/16-18 X 3/4, HEX HEAD, PLATED
8	4	9-H-322	WASHER, LOCK 5/16" ZINC PLATED.
7	4	9-H-206	WASHER, 5/16" FLAT PLATED
6	1	9-H-93	ROD, MOTOR MOUNT SUPPORT, HANDY THREAD
5	1	9-H-26	BUSHING, RUBBER FOR MOTOR
4	2	9-H-311	WASHER, NEOPRENE RUBBER, 1-1/2 X 3/8 X 1/8, SEE MSB2
3	2	9-H-37	WASHER, FENDER 3/8 X 1 1/2
2	2	9-H-55	KNOB, 3/8-16
1	1	9-H-73	MOTOR, 1-1/2 HP 120/240 V TEFC 1 PHASE 1725 RPM
FLG	QTY	PART NO	DESCRIPTION

LIMITS ON DIMENSIONS
UNLESS
OTHERWISE SPECIFIED

2-PL DECIMAL $\pm .01$
3-PL DECIMAL $\pm .005$
FRACTIONAL $\pm 1/64$
ANGULAR $\pm 1/2^\circ$



**AAA PRODUCTS
INTERNATIONAL**
7114 Harry Hines Blvd
Dallas, TX 75235

DRAWN: RMcKenna

DATE: 7/6/2017

CHECKED: KWaitte

DATE: 7/6/2017

SCALE: None

SHEET: 1 OF 1

RELEASED: HWomack

DATE: 7/6/2017

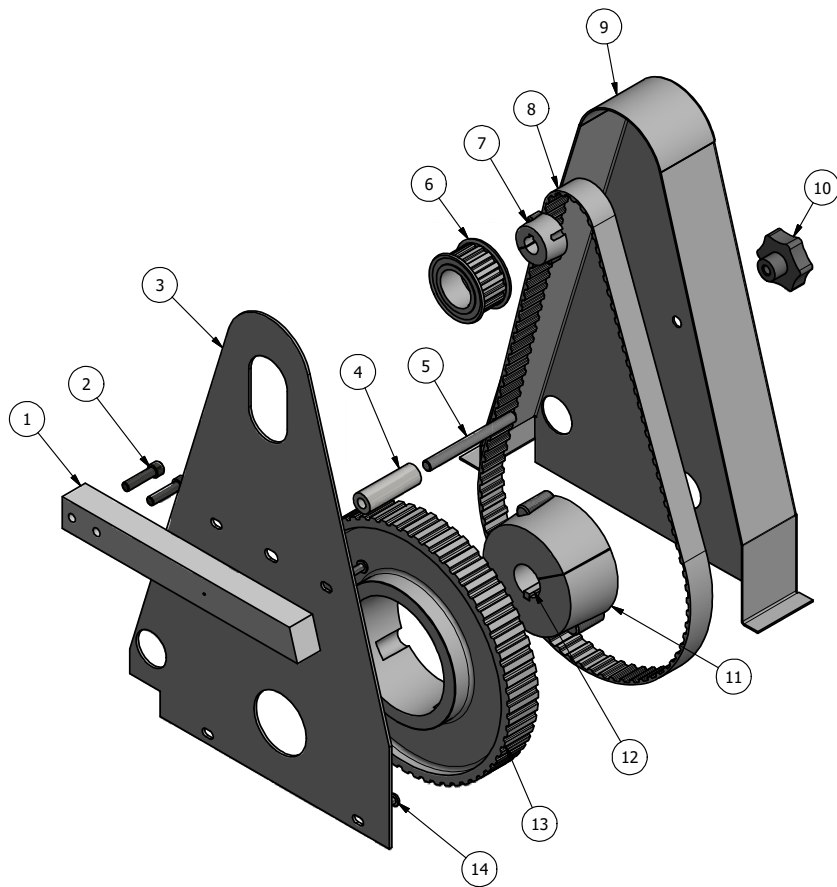
TITLE:

**MOTOR INSTALLATION,
1-1/2 HP, 120-240/60, 1725 RPM,
HANDY THREAD**

PART NO.:

AY-H-184

REV.:




SEE NOTE 3 ⇒	14	4	9-H-47	SCREW, 1/4-20 X 1/2, BUTTON HEAD SOCKET CAP
	13	1	9-H-221-60	PULLEY, TAPER LOCK, H100, 60 PITCH, 9.549 PD, HANDY THREAD
SEE NOTE 3 ⇒	12	1	9-H-10	KEY, 1/4" X 2"
	11	1	9-H-224	BUSHING, TAPER LOCK, #3020X1-3/16,
	10	1	9-H-55	KNOB, 3/8-16
	9	1	9-H-65	GUARD, BELT, HANDY THREAD
SEE NOTE 3 ⇒	8	1	445H100	BELT, SYNCHRONOUS, TIMING, H (.500) PITCH, 89 TEETH, 445H100, HANDY THREAD
SEE NOTE 3 ⇒	7	1	9-H-223	BUSHING, TAPER LOCK, #1108X5/8, HANDY THREAD
SEE NOTE 3 ⇒	6	1	9-H-221-14	PULLEY, TAPER LOCK, H100, 14 PITCH, 2.228 PD, HANDY THREAD
	5	1	9-H-357	STUD, BELT GUARD, ATTACHMENT, HANDY THREAD
	4	1	9-H-356	SPACER, BELT GUARD, ATTACHMENT, HANDY THREAD
	3	1	9-H-66	PLATE, BACK, BELT GUARD, HANDY THREAD
	2	2	V-402	SCREW, 5/16-18 X 1-1/4, SOCKET HEAD CAP
	1	1	9-H-96	BAR, BACK MOUNTING, GUARD, HANDY THREAD
FLG	QTY		PART NO	DESCRIPTION

CUSTOMER NOTES:

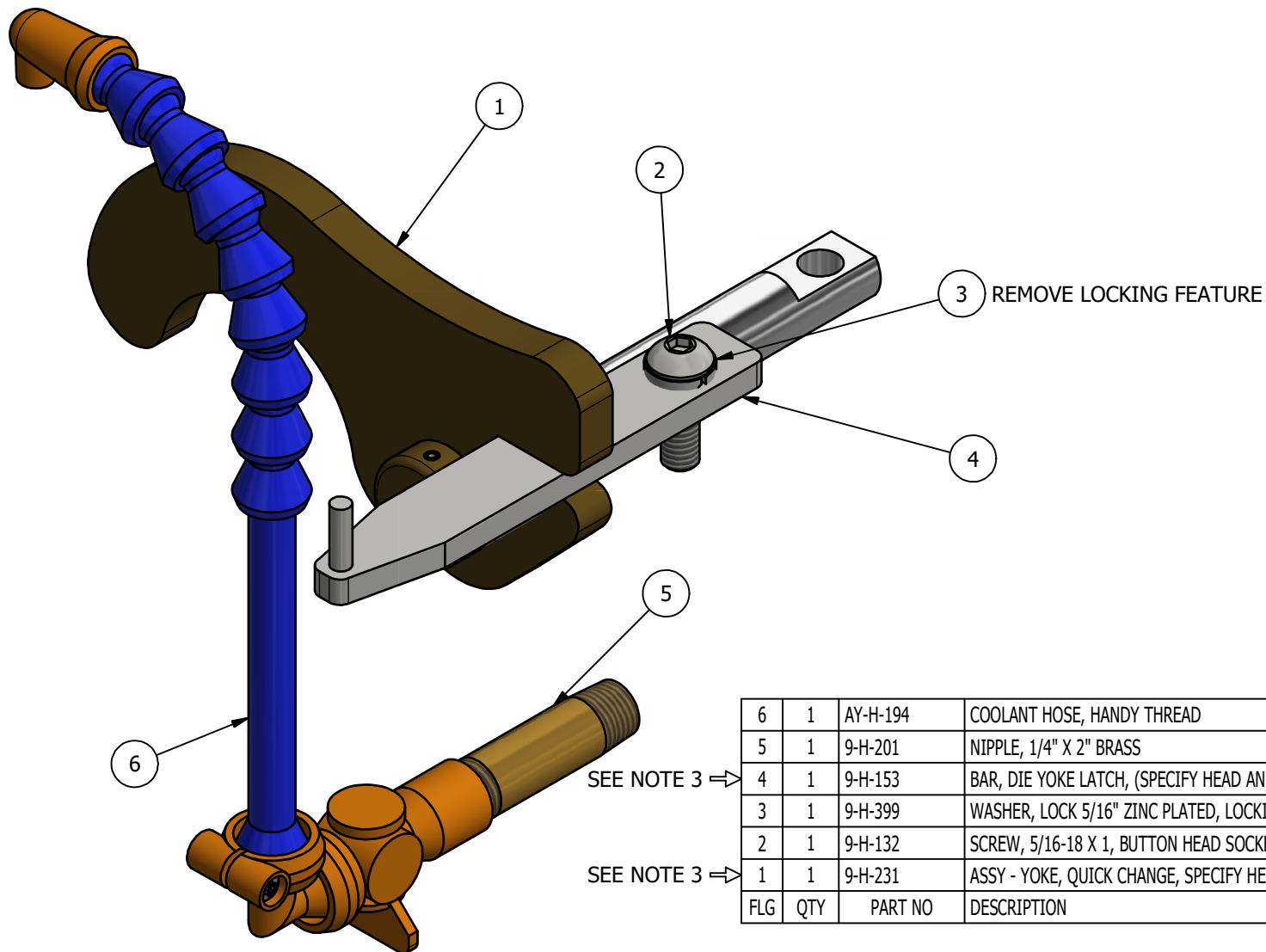
- 1) ALWAYS PROVIDE MACHINE SERIAL NUMBER.
- 2) SEE ASSEMBLIES FOR INDIVIDUAL PARTS.
- 3) THESE PARTS ARE MACHINE SPECIFIC AND MUST MATCH THE SERIAL NUMBER OF THE MACHINE. PLEASE CONSULT FACTORY PRIOR ORDER PARTS.

C	9/11/2017	ADDED RATIO TO PART NUMBER
B	3/19/2007	CHANGED GUARD SPACER TO A 2-PIECE
A	7/1/1998	MODIFIED SWITCH SPACING
NO.	DATE	REVISION

LIMITS ON DIMENSIONS UNLESS OTHERWISE SPECIFIED		2-PL DECIMAL ± .01 3-PL DECIMAL ± .005 FRACTIONAL ± 1/64 ANGULAR ± 1/2°	 AAA PRODUCTS INTERNATIONAL 7114 Harry Hines Blvd Dallas, TX 75235
DRAWN: RMckenna	DATE: 7/7/2017	CHECKED: KWaitte	DATE: 7/7/2017
SCALE: None	SHEET: 1 OF 1	RELEASED: HWomack	DATE: 7/7/2017
TITLE: BELT INSTALLATION, 1-1/2 HP, 0.23 RATIO, 445H100 BELT, HANDY THREAD		PART NO.: AY-H-219-023	REV.: C

THE INFORMATION CONTAINED WITHIN THIS DOCUMENT IS PROPRIETARY TO AAA PRODUCTS AND MAY NOT BE DISCLOSED WITHOUT PRIOR WRITTEN CONSENT

C:\Engineering\Inventor Files\Head Assembly\AY-H-219-023.dwg



SEE NOTE 3 ⇒

SEE NOTE 3 ⇒

6	1	AY-H-194	COOLANT HOSE, HANDY THREAD
5	1	9-H-201	NIPPLE, 1/4" X 2" BRASS
4	1	9-H-153	BAR, DIE YOKE LATCH, (SPECIFY HEAD AND ADAPTOR), HANDY THREAD
3	1	9-H-399	WASHER, LOCK 5/16" ZINC PLATED, LOCKING FEATURE REMOVED
2	1	9-H-132	SCREW, 5/16-18 X 1, BUTTON HEAD SOCKET CAP
1	1	9-H-231	ASSY - YOKE, QUICK CHANGE, SPECIFY HEAD, HANDY THREAD
FLG	QTY	PART NO	DESCRIPTION

CUSTOMER NOTES:

- 1) ALWAYS PROVIDE MACHINE SERIAL NUMBER.
- 2) SEE ASSEMBLIES FOR INDIVIDUAL PARTS.
- 3) THESE PARTS ARE MACHINE SPECIFIC AND MUST MATCH THE SERIAL NUMBER OF THE MACHINE. PLEASE CONSULT FACTORY PRIOR ORDER PARTS.

A	7/1/1998	MODIFEID SWITCH SPACING.
NO.	DATE	REVISION

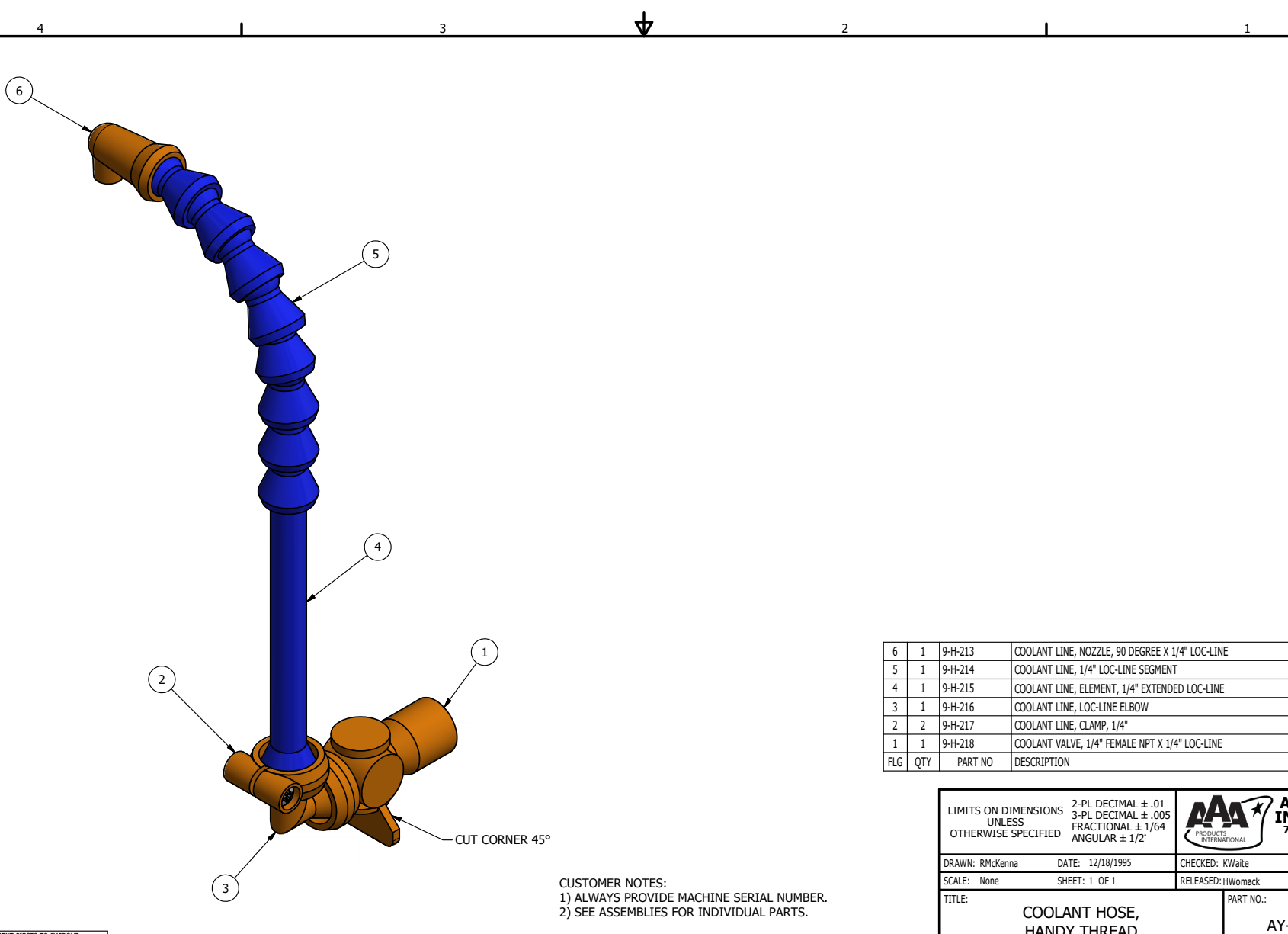
LIMITS ON DIMENSIONS
UNLESS
OTHERWISE SPECIFIED

2-PL DECIMAL $\pm .01$
3-PL DECIMAL $\pm .005$
FRACTIONAL $\pm 1/64$
ANGULAR $\pm 1/2^\circ$



**AAA PRODUCTS
INTERNATIONAL**
7114 Harry Hines Blvd
Dallas, TX 75235

DRAWN: RMcKenna	DATE: 1/2/1995	CHECKED: KWait	DATE: 1/29/1996
SCALE: None	SHEET: 1 OF 1	RELEASED: HWomack	DATE: 1/29/1996
TITLE: YOKE & COOLANT INTSL, 1" DRIVE SHAFT, HANDY THREAD		PART NO.: AY-H-228	REV.: A



CUSTOMER NOTES:
1) ALWAYS PROVIDE MACHINE SERIAL NUMBER.
2) SEE ASSEMBLIES FOR INDIVIDUAL PARTS.

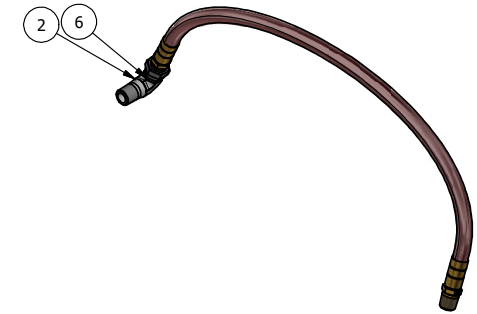
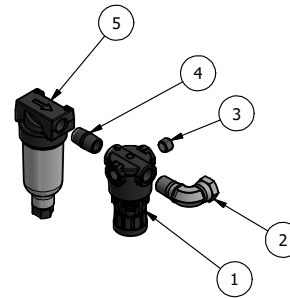
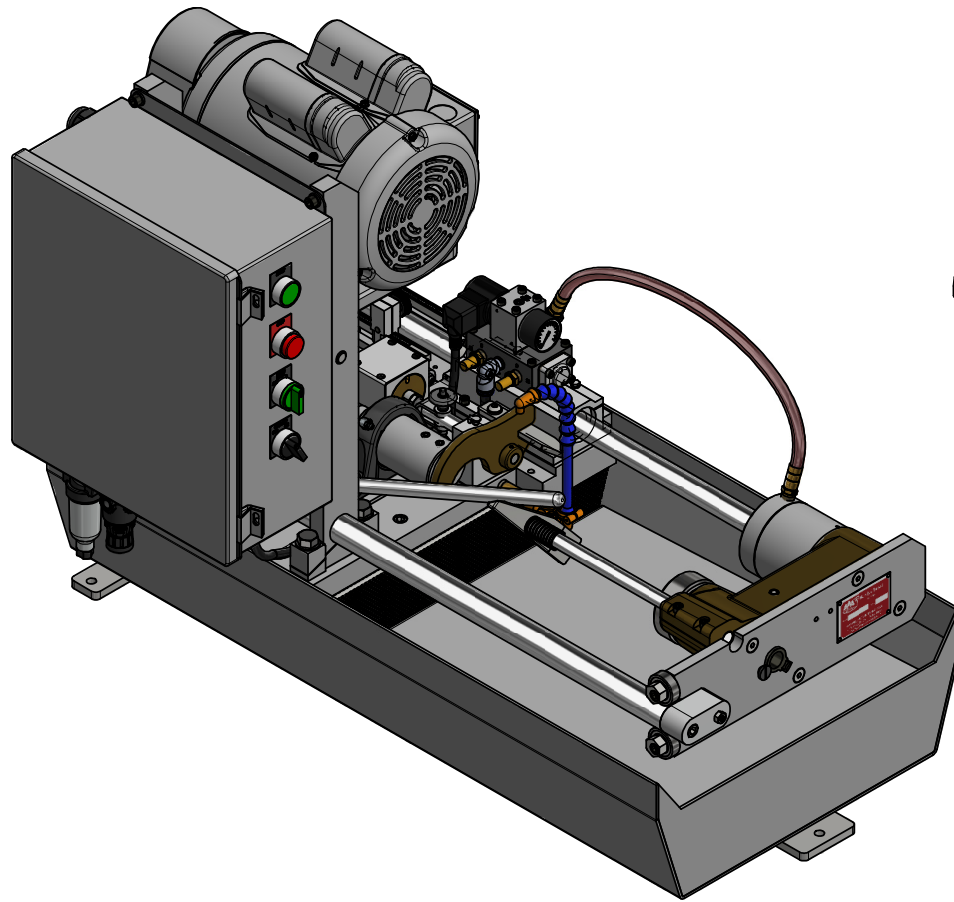
6	1	9-H-213	COOLANT LINE, NOZZLE, 90 DEGREE X 1/4" LOC-LINE
5	1	9-H-214	COOLANT LINE, 1/4" LOC-LINE SEGMENT
4	1	9-H-215	COOLANT LINE, ELEMENT, 1/4" EXTENDED LOC-LINE
3	1	9-H-216	COOLANT LINE, LOC-LINE ELBOW
2	2	9-H-217	COOLANT LINE, CLAMP, 1/4"
1	1	9-H-218	COOLANT VALVE, 1/4" FEMALE NPT X 1/4" LOC-LINE
FLG	QTY	PART NO	DESCRIPTION

LIMITS ON DIMENSIONS UNLESS OTHERWISE SPECIFIED		2-PL DECIMAL ± .01 3-PL DECIMAL ± .005 FRACTIONAL ± 1/64 ANGULAR ± 1/2°	AAA PRODUCTS INTERNATIONAL 7114 Harry Hines Blvd Dallas, TX 75235	
DRAWN: RMckenna		DATE: 12/18/1995	CHECKED: KWalte	DATE: 3/13/2017
SCALE: None		SHEET: 1 OF 1	RELEASED: HWomack	DATE: 3/13/2017
TITLE: COOLANT HOSE, HANDY THREAD			PART NO.: AY-H-194	REV.: A

A	7/31/98	RMV 2 HOSE SEGMENT PIECES TO IMPROVE COOLANT DIRECTION.
NO.	DATE	REVISION

THE INFORMATION CONTAINED WITHIN THIS DOCUMENT IS PROPRIETARY TO AAA PRODUCTS AND MAY NOT BE DISCLOSED WITHOUT PRIOR WRITTEN CONSENT


P:\Engineering\Inventory Files\Internal Drawings\Lead Assembly\AY-H-194.dwg



6	1	9-H-370	HOSE, CHUCK CYLINDER, HANDY THREAD
5	1	9-H-76	FILTER, AIR INLET
4	1	9-H-200	NIPPLE, 1/4" HEX BRASS
3	1	V-19	PLUG, SOCKET PIPE 1/8" NPT (#601-3 PITTSBURG PLUG PART #.)
2	2	9-H-35	FITTING, 90 DEGREE SWIVEL, 1/4" NPT MALE X 1/4" NPT FEMALE
1	1	9-H-74	REGULATOR
FLG	QTY	PART NO	DESCRIPTION

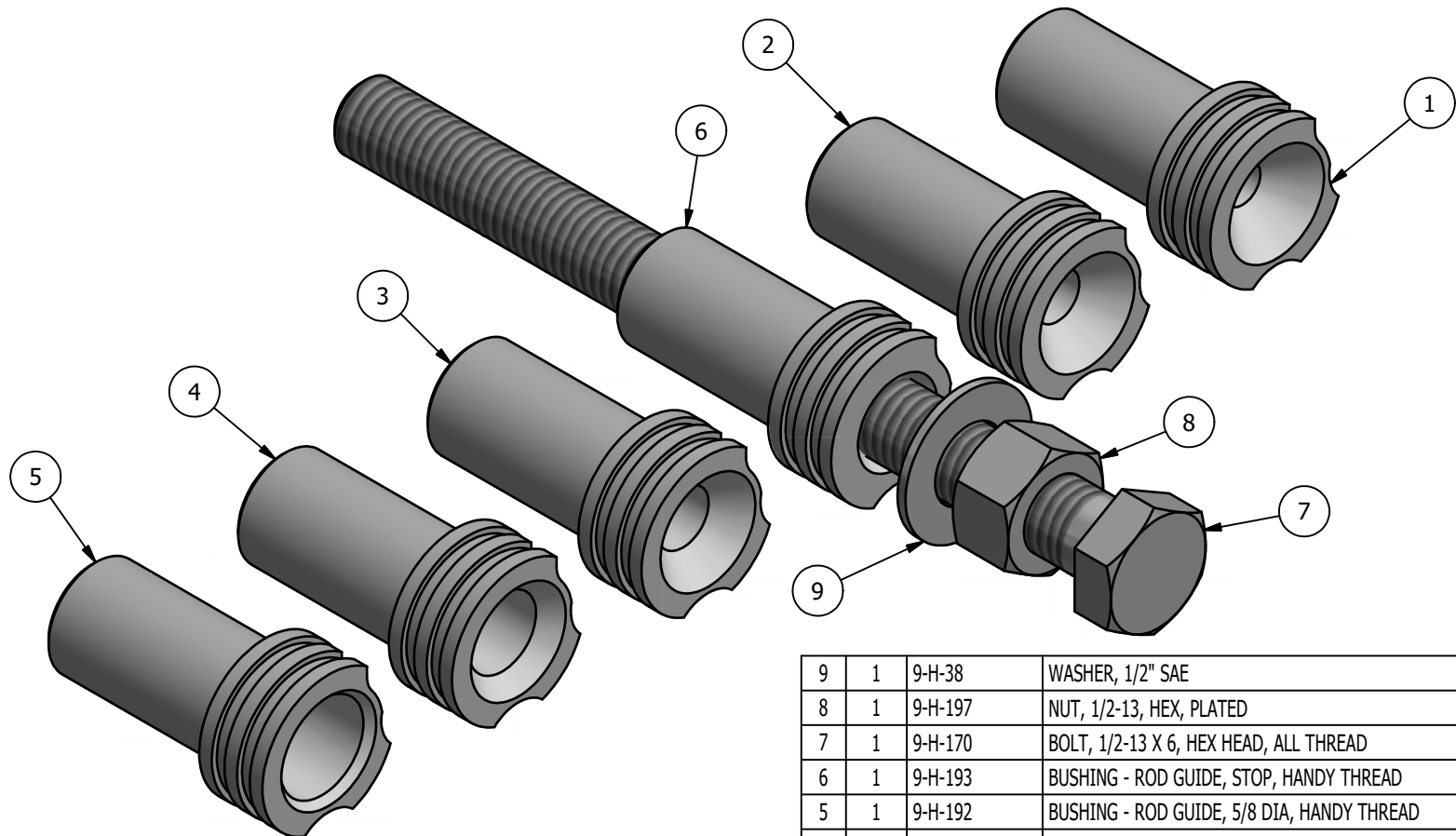
CUSTOMER NOTES:
 1) ALWAYS PROVIDE MACHINE SERIAL NUMBER.
 2) SEE ASSEMBLIES FOR INDIVIDUAL PARTS.

B	12/03/2001	CHNGD ITEM 3 FROM 9-H-35 STRAIGHT
A	7/1/1998	MODIFIED SWITCH SPACING
NO.	DATE	REVISION

LIMITS ON DIMENSIONS UNLESS OTHERWISE SPECIFIED		2-PL DECIMAL $\pm .01$ 3-PL DECIMAL $\pm .005$ FRACTIONAL $\pm 1/64$ ANGULAR $\pm 1/2^\circ$		 AAA PRODUCTS INTERNATIONAL 7114 Harry Hines Blvd Dallas, TX 75235	
DRAWN: RMckenna		DATE: 1/2/1995		CHECKED: HWomack	
SCALE: None		SHEET: 1 OF 1		RELEASED: KWaite	
TITLE: AIR LINE INSTALLATION, HANDY THREAD				PART NO.: AY-H-226	
				REV.: B	

THE INFORMATION CONTAINED WITHIN THIS DOCUMENT IS PROPRIETARY TO AAA PRODUCTS AND MAY NOT BE DISCLOSED WITHOUT PRIOR WRITTEN CONSENT

C:\Engineering\Inventor Files\Internal Drawings\Head Assembly\AY-H-226.dwg



9	1	9-H-38	WASHER, 1/2" SAE
8	1	9-H-197	NUT, 1/2-13, HEX, PLATED
7	1	9-H-170	BOLT, 1/2-13 X 6, HEX HEAD, ALL THREAD
6	1	9-H-193	BUSHING - ROD GUIDE, STOP, HANDY THREAD
5	1	9-H-192	BUSHING - ROD GUIDE, 5/8 DIA, HANDY THREAD
4	1	9-H-191	BUSHING - ROD GUIDE, 1/2 DIA, HANDY THREAD
3	1	9-H-190	BUSHING - ROD GUIDE, 3/8 DIA, HANDY THREAD
2	1	9-H-189	BUSHING - ROD GUIDE, 5/16 DIA, HANDY THREAD
1	1	9-H-188	BUSHING - ROD GUIDE, 1/4 DIA, HANDY THREAD
FLG	QTY	PART NO	DESCRIPTION

LIMITS ON DIMENSIONS
UNLESS
OTHERWISE SPECIFIED

2-PL DECIMAL $\pm .01$
3-PL DECIMAL $\pm .005$
FRACTIONAL $\pm 1/64$
ANGULAR $\pm 1/2^\circ$



**AAA PRODUCTS
INTERNATIONAL**
7114 Harry Hines Blvd
Dallas, TX 75235

DRAWN: RMcKenna

DATE: 9/13/2017

CHECKED: KWaitte

DATE: 9/13/2017

SCALE: None

SHEET: 1 OF 1

RELEASED: HWomack

DATE: 9/13/2017

TITLE:

**KIT, BUSHING, ROD GUIDE,
HANDY THREAD**

PART NO.:

AY-H-GBK

REV.: